

Client Confidential - Levis Rollout - Drawings – Flip Fixture

www.Client ConfidentialDisplay.com

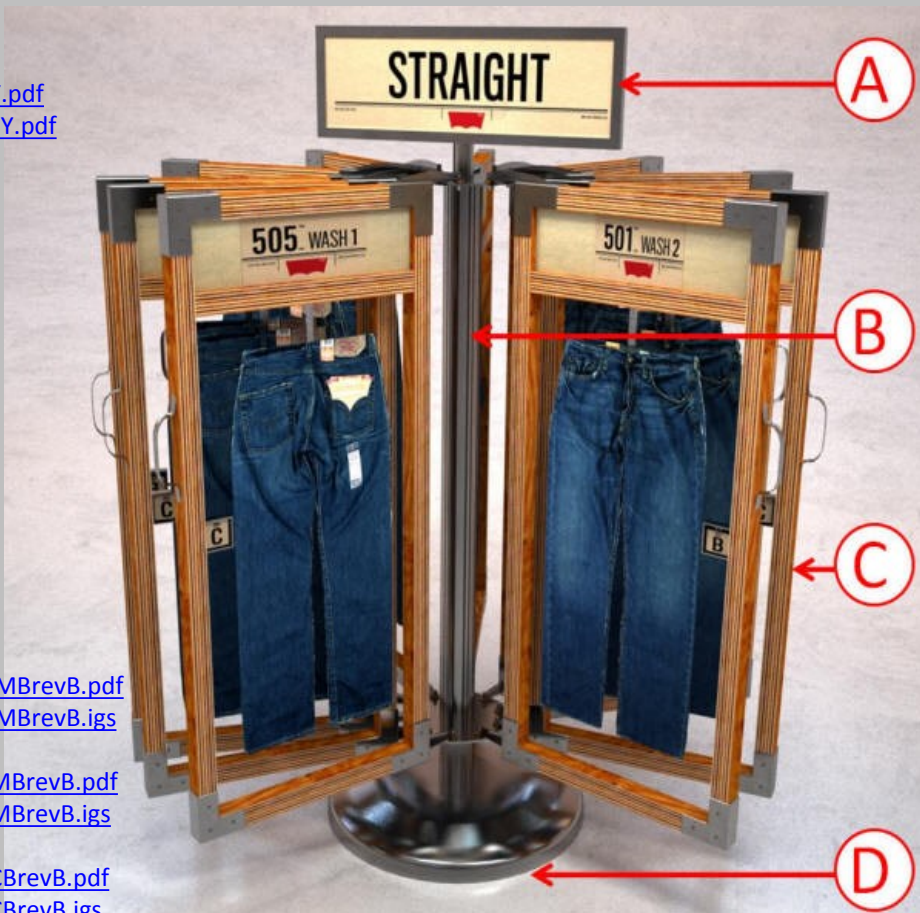
FLIP FIXTURE ASSEMBLY

- Assembly Master Drawing <http://www.mgs-designs.com/BD/DWG/FFASSY.pdf>
- Assembly Detail Drawing <http://www.mgs-designs.com/BD/DWG/Levi-ASSY.pdf>
- 3D Model – IGS <http://www.mgs-designs.com/BD/DWG/FFASSY.igs>

FLIP FIXTURE SUB-ASSY / DETAILS

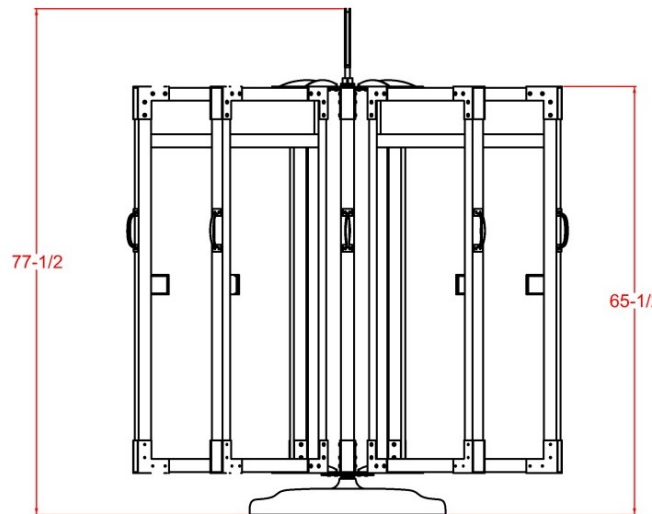
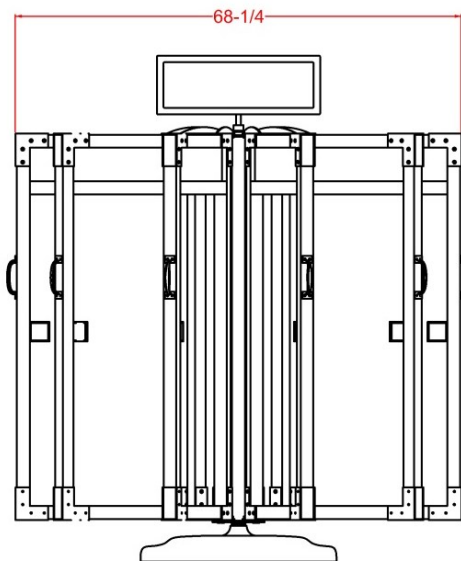
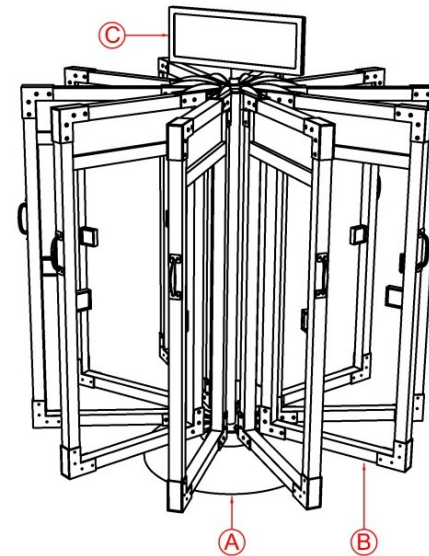
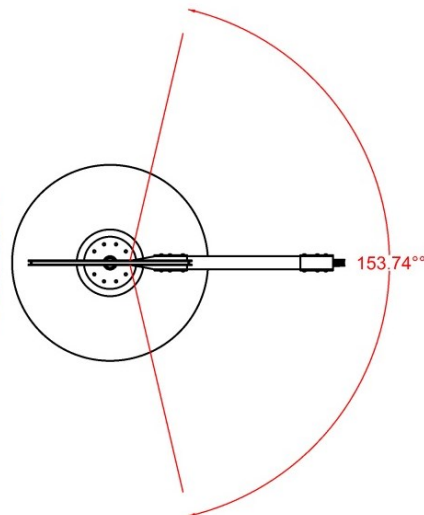
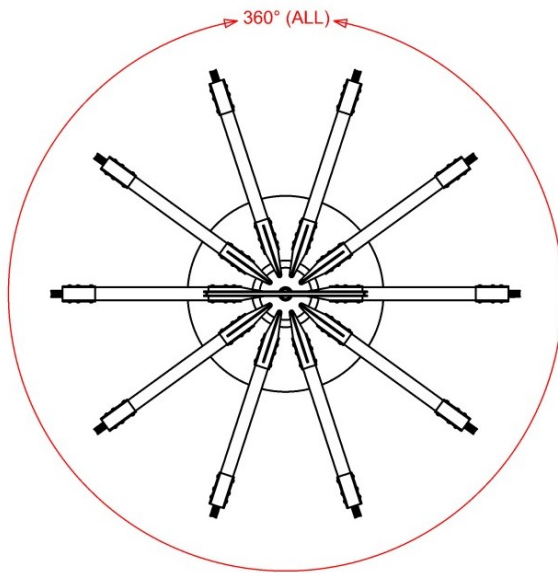
(All DXF Flat patterns are linked from within PDF file Drawings)

- A - Sign Sub-Assembly
 - <http://www.mgs-designs.com/BD/DWG/FFSIGN.pdf>
 - <http://www.mgs-designs.com/BD/DWG/FFSIGN.igs>
- B - Rotating Center Sub-Assembly
 - <http://www.mgs-designs.com/BD/DWG/FFROTATINGFRAME.pdf>
 - <http://www.mgs-designs.com/BD/DWG/FFROTATINGFRAME.igs>
- C - Flip Frame Sub-Assembly
 - <http://www.mgs-designs.com/BD/DWG/FFDISPLAY.pdf>
 - <http://www.mgs-designs.com/BD/DWG/FFDISPLAY.igs>
 - Inner Card Holder
 - Pant Hanger
 - Steel Corner Brackets
 - Upper Inside
 - <http://www.mgs-designs.com/BD/DWG/Levi-IUFFMBrevB.pdf>
 - <http://www.mgs-designs.com/BD/DWG/Levi-IUFFMBrevB.igs>
 - Lower Inside
 - <http://www.mgs-designs.com/BD/DWG/Levi-ILFFMBrevB.pdf>
 - <http://www.mgs-designs.com/BD/DWG/Levi-ILFFMBrevB.igs>
 - Outside brackets
 - <http://www.mgs-designs.com/BD/DWG/Levi-OFFCBrevB.pdf>
 - <http://www.mgs-designs.com/BD/DWG/Levi-OFFCBrevB.igs>
- Wood Frame
 - <http://www.mgs-designs.com/BD/DWG/FFWOODFRAME.pdf>
 - <http://www.mgs-designs.com/BD/DWG/FFDISPLAY.pdf>
- D - Base and Support Frame Sub-Assembly
 - <http://www.mgs-designs.com/BD/DWG/Levi-FFBASEassy.pdf>
 - <http://www.mgs-designs.com/BD/DWG/Levi-FFBASE.pdf>
 - Base Casting
 - <http://www.mgs-designs.com/BD/DWG/Levi-FFBASE.pdf>
 - <http://www.mgs-designs.com/BD/DWG/Levi-FFBASE.igs>



Notes: Complete DWG package





- A Flip Fixture Base Assy.
<http://www.mgs-designs.com/BD/DWG/Levi-FFBASEassy.pdf>
- B Flip Fixture Display Frame
<http://www.mgs-designs.com/BD/DWG/FFDISPLAY.pdf>
- C Top Sign Holder
<http://www.mgs-designs.com/BD/DWG/FFSIGN.pdf>

Download 3D Model of Assy Here: <http://www.mgs-designs.com/BD/DWG/FFASSY.igs>

Revision: B /9-14-10

Levi's

Document Link: <http://www.mgs-designs.com/BD/DWG/FFASSY.pdf>

Assy: Flip Fixture

Sub-Assy: Flip Fixture Base Assy

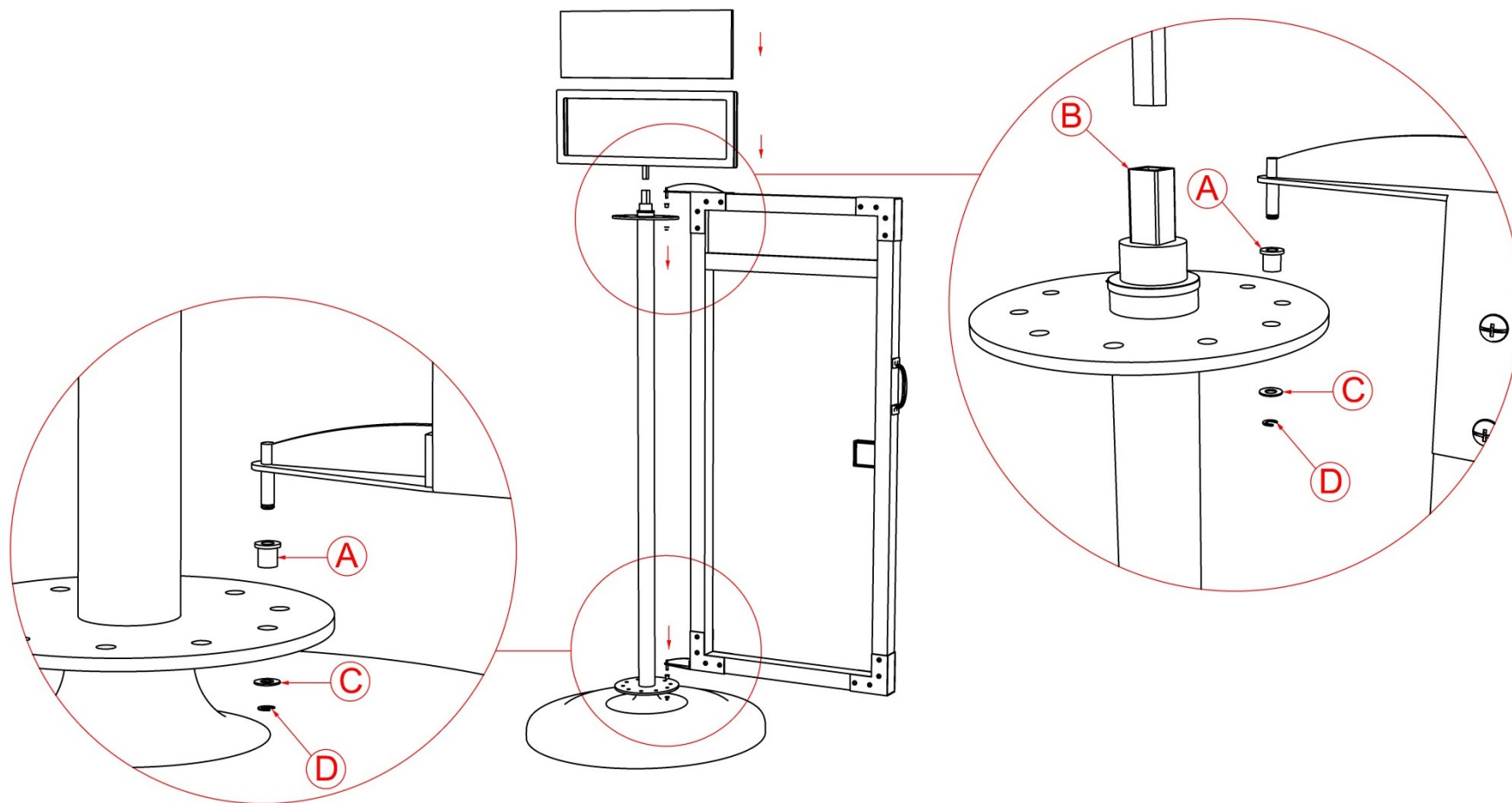
A Oil Impregnated Bronze Flange Bearing
Inside Diameter: 1/4 Outside Diameter: 3/8 Overall
Length: 7/16 Flange Outside Diameter: 1/2

<http://www1.mscdirect.com/CGI/NNSRIT?PMAKA=35401553>

B 0.625" (O.D.) x 0.065" (Thick) x 2» Long A36 SQUARE
TUBE
~OR~
7/8" (O.D.) x .065" wall x .745 (I.D.) x 2" Long

C Washer .25" I.D. .50"+ O.D.

D C-CLIP .25" I.D.



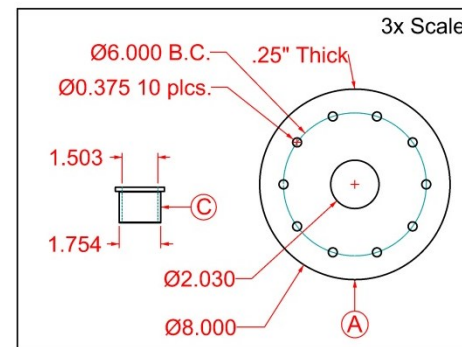
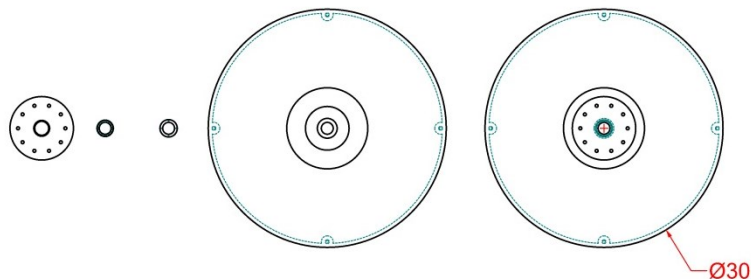
Revision: C /9-24-10

Levi's

Document Link: <http://www.mgs-designs.com/BD/DWG/Levi-ASSY.pdf>

Assy: Flip Fixture

Sub-Assy: Flip Fixture Detail – Connection / Assy



A Flange Plate Qty:2 .25" Thick
[DXF Link: www.mgs-designs.com/BD/CNC/levis007.dxf](http://www.mgs-designs.com/BD/CNC/levis007.dxf)

B Steel Tube 2.00" O.D. / .12" thk.
 1020 DOM Structural Round Steel Tube
 Reference: See stock #: T22120 @
www.depotmetals.com

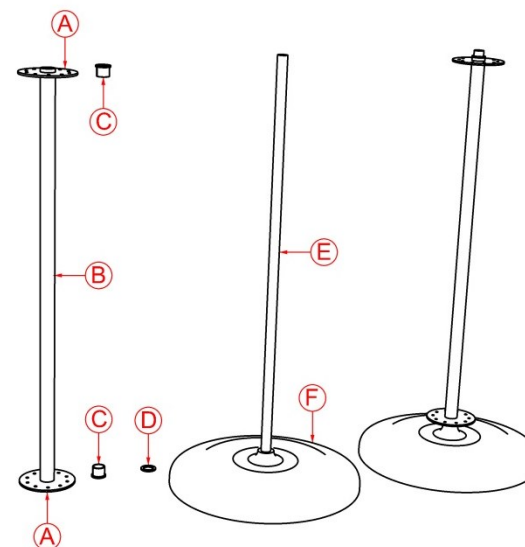
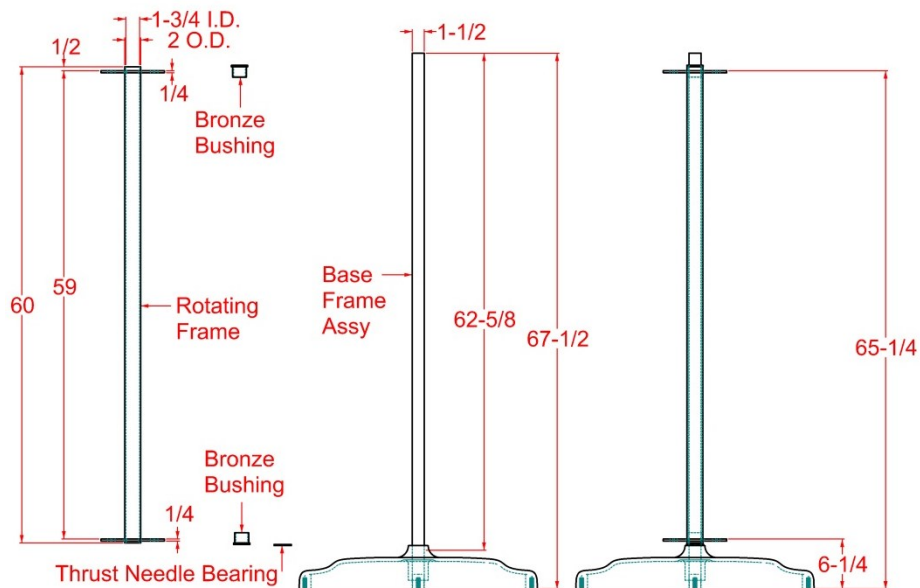
C MSC Direct PN#: 35401553
 Oil Impregnated Bronze Flange Bearing
<http://www1.mscdirect.com/CGI/NNSRIT?PMAKA=35401553>

D MSC Direct PN#: 03380987
 Caged Needle Bearing x1 Qty.
<http://www1.mscdirect.com/CGI/NNSRIT?PMAKA=03380987>

MSC Direct PN#: 03381167
 Thrust Bearing Race x2 Qty.
<http://www1.mscdirect.com/CGI/NNSRIT?PMAKA=03381167>

E 1.5" O.D. HRS Round Bar 67" long

F Cast Base
 3D File: <http://www.mgs-designs.com/BD/DWG/FFBASE.igs>
 CAD File: <http://www.mgs-designs.com/BD/DWG/Levi-FFBASE.pdf>



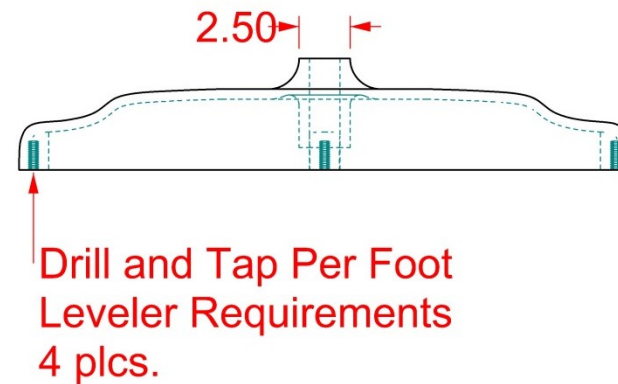
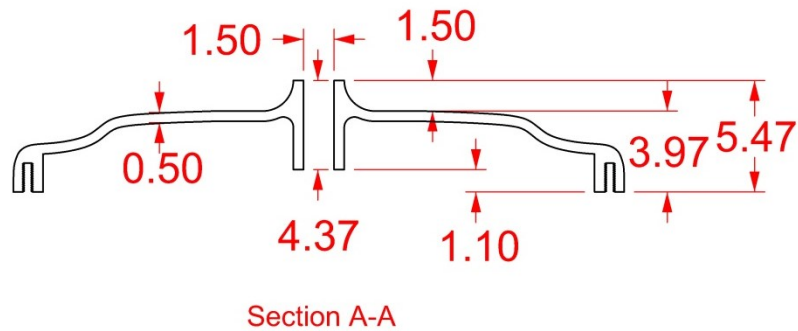
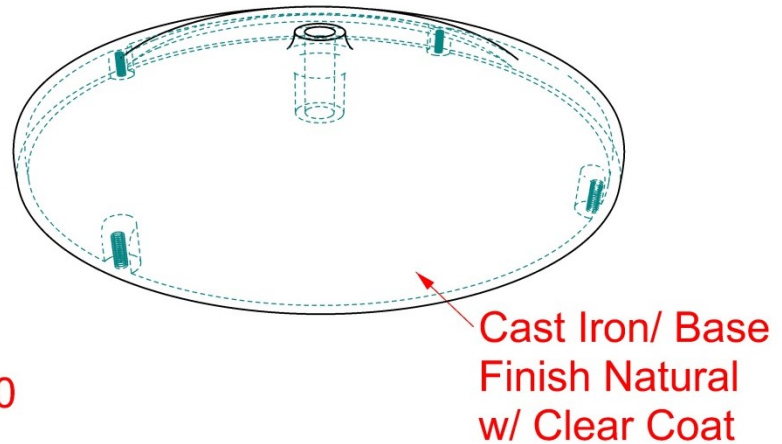
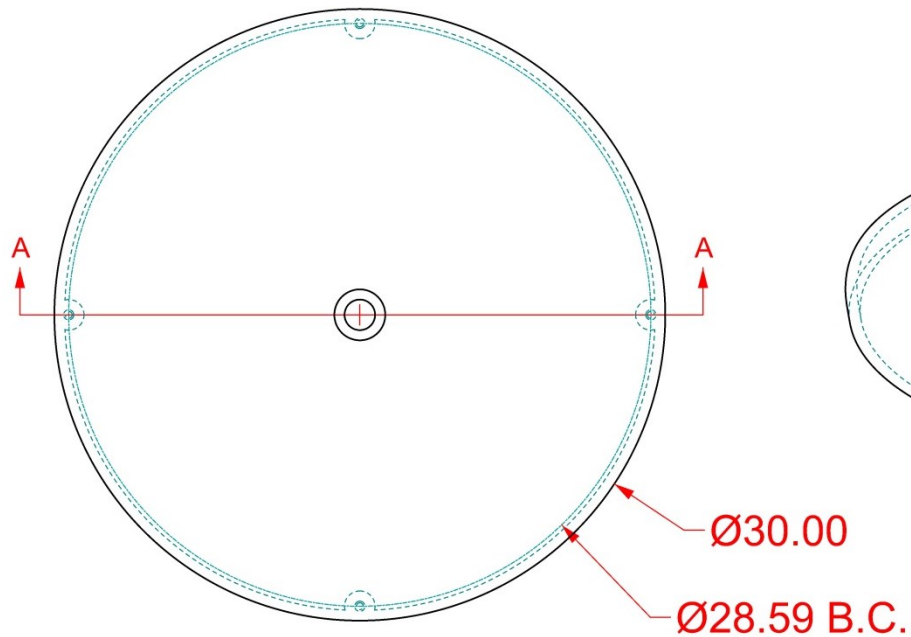
Download 3D Model of Assy Here: <http://www.mgs-designs.com/BD/DWG/Levi-FFBASEassy.igs>

Revision: B /9-14-10

Levi's Document Link: <http://www.mgs-designs.com/BD/DWG/Levi-FFBASEassy.pdf>

Assy: Flip Fixture

Sub-Assy: Flip Fixture Base Assy



Download 3D Model of Assy Here: <http://www.mgs-designs.com/BD/DWG/Levi-FFBASE.igs>

Revision: B /9-14-10

Levi's

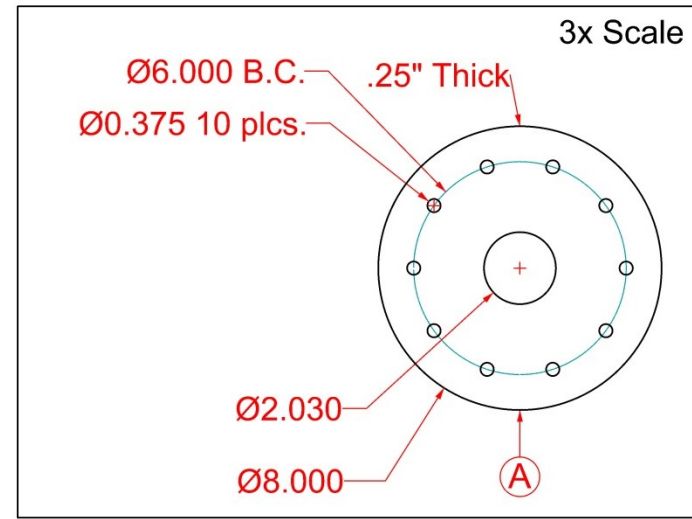
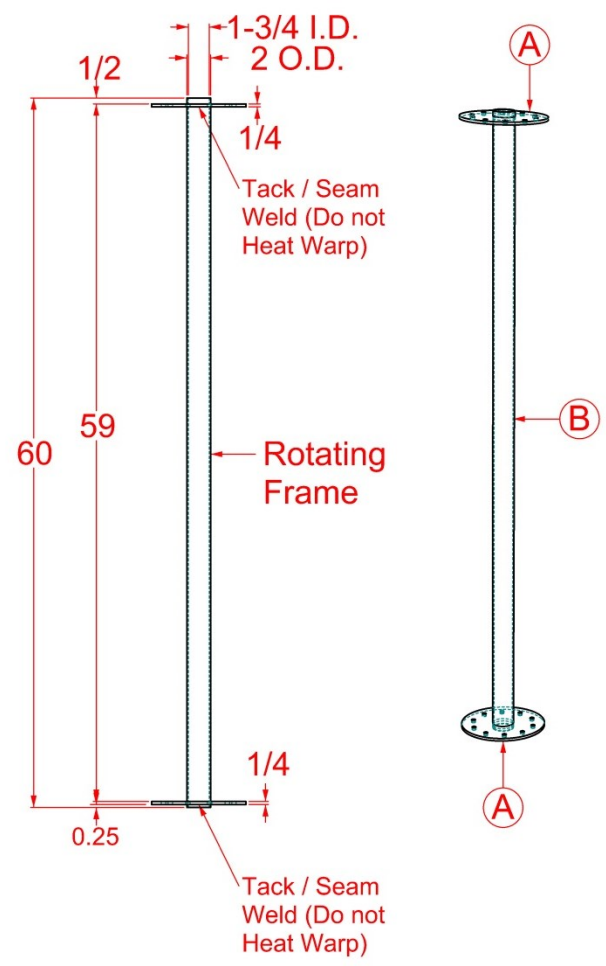
Document Link: <http://www.mgs-designs.com/BD/DWG/Levi-FFBASE.pdf>

Assy: Flip Fixture

Sub-Assy: Flip Fixture Base

A Flange Plate Qty:2 .25" Thick
DXF Link: www.mgs-designs.com/BD/CNC/levis007.dxf

B Steel Tube 2.00" O.D. / .12" thk.
1020 DOM Structural Round Steel Tube
Reference: See stock #: T22120 @ www.depotmetals.com



Download 3D Model of Assy Here: <http://www.mgs-designs.com/BD/DWG/FFROTATINGFRAME.igs>

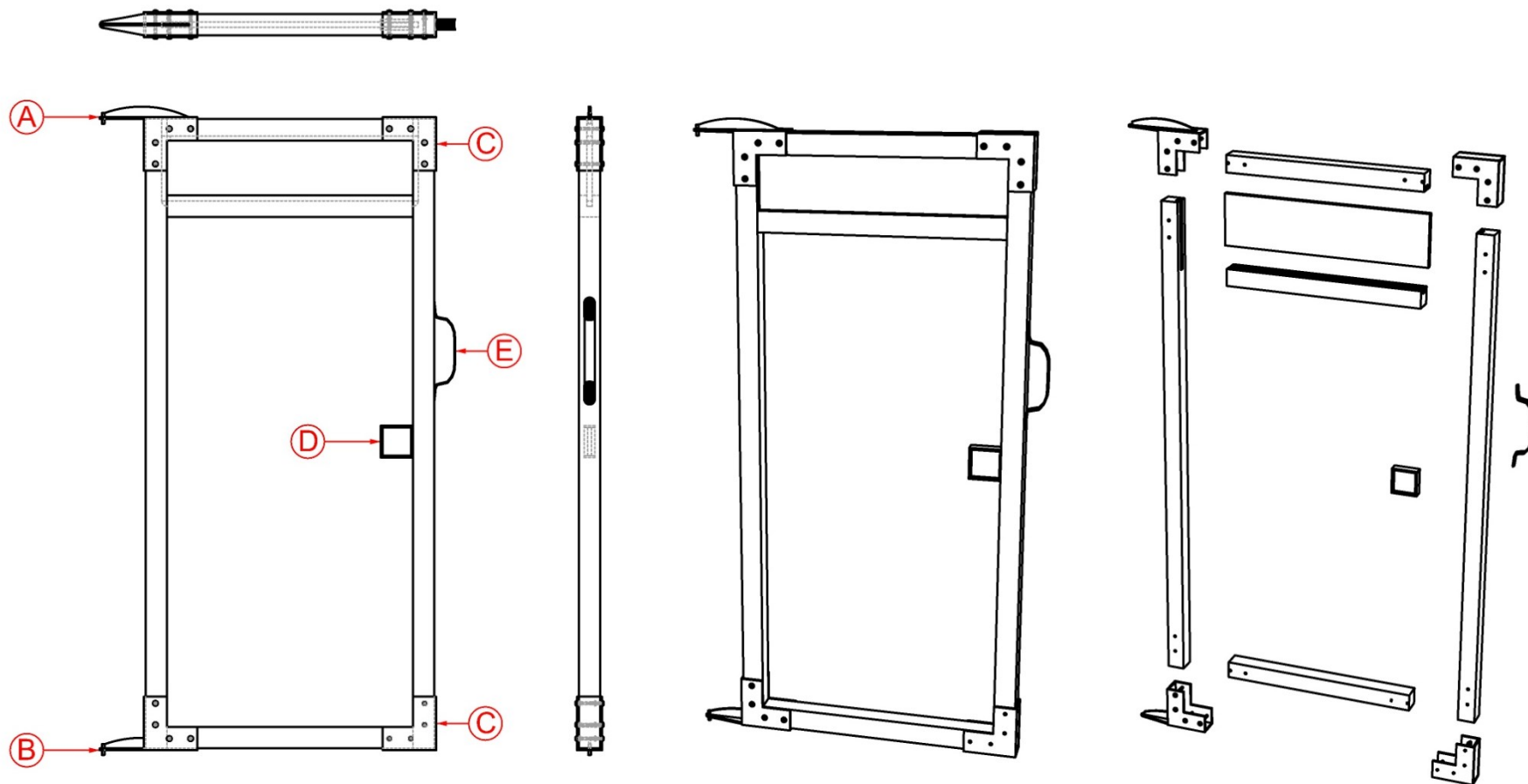
Revision: A /9-1-10

	Levi's	Document Link: http://www.mgs-designs.com/BD/DWG/FFROTATINGFRAME.pdf
	Assy: Flip Fixture	Sub-Assy: Flip Fixture Rotating Frame

A: <http://www.mgs-designs.com/BD/DWG/Levi-IUFFMBrevB.pdf>
B: <http://www.mgs-designs.com/BD/DWG/Levi-ILFFMBrevB.pdf>
C: <http://www.mgs-designs.com/BD/DWG/Levi-OFFCBrevB.pdf>

D: TBD

E: <http://www1.mscdirect.com/CGI/NNSRIT?PMAKA=32845752>



Cutlist: <http://www.mgs-designs.com/BD/DWG/FFWOODFRAME.pdf>

Download 3D Model of Assy Here: <http://www.mgs-designs.com/BD/DWG/FFDISPLAY.igs>

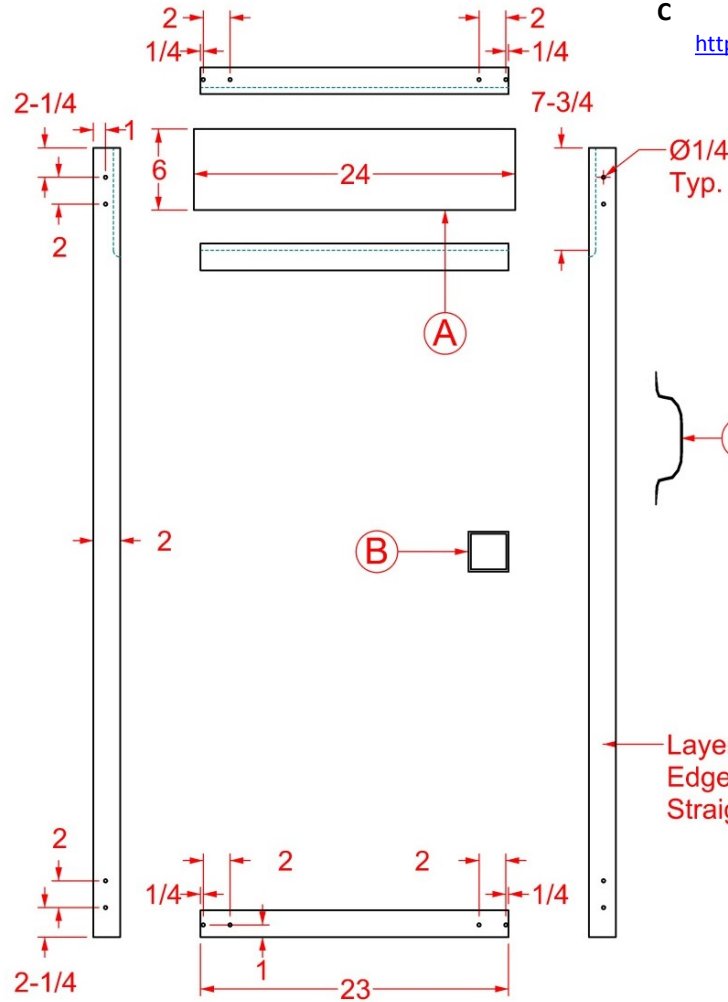
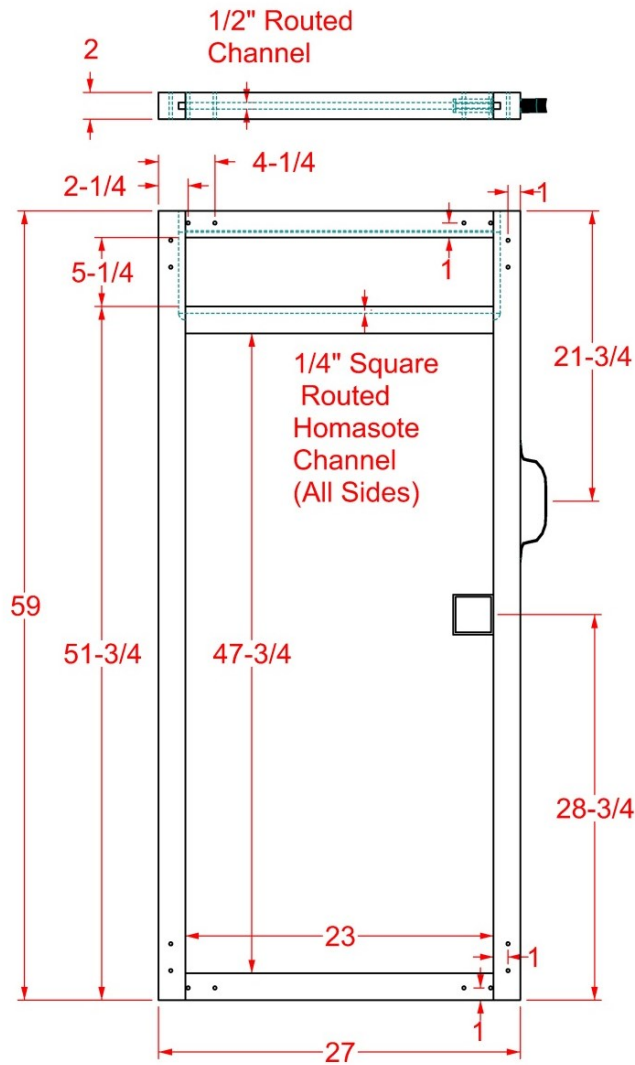
Revision: B /9-14-10

Levi's

Document Link: <http://www.mgs-designs.com/BD/DWG/FFDISPLAY.pdf>

Assy: Flip Fixture

Sub-Assy: Flip Fixture Display Frame



A Homasote 24"x6"x.5"

B TBD

DWG Link:

C Door Pull: Zinc Plated

<http://www1.mscdirect.com/CGI/NNSRIT?PMA>

[KA=32845752](http://www1.mscdirect.com/CGI/NNSRIT?PMA)



Layered Plywood
Edge Grain Exposed
Straight 2"x2" Square

Download 3D Model of Assy Here: <http://www.mgs-designs.com/BD/DWG/FFWOODFRAME.igs>

Revision: B /9-24-10

Levi's

Document Link: <http://www.mgs-designs.com/BD/DWG/FFWOODFRAME.pdf>

Assy: Flip Fixture

Sub-Assy: Flip Fixture Wooden Frame Assy

A Stress Plate Qty:1 7ga. (.1793") Sheet

DXF Link: www.mgs-designs.com/BD/CNC/levis001.dxf

B Main Plate (.093") Sheet

DXF Link: www.mgs-designs.com/BD/CNC/levis002.dxf

C Headless Grooved Clevis Pin : 1/4" Dia. / Length: 1.25"

Production Quantities: http://www.thread-rite.com/bee_leitzke/headless_pins.htm Quote#: TBD
(For Prototyping qty.'s use: <http://www.grainger.com> PN# 2XAC4)
<http://www.mgs-designs.com/BD/DWG/PIN.pdf>

D BoltDepot.com PN#: 14304

Diameter: 1/4 barrel (#10-24 thread) 2" Long

<http://www.boltdepot.com/product.aspx?cc=69&cs=247&cm=7&cd=1818>

E Washer .25" I.D. .032" thick

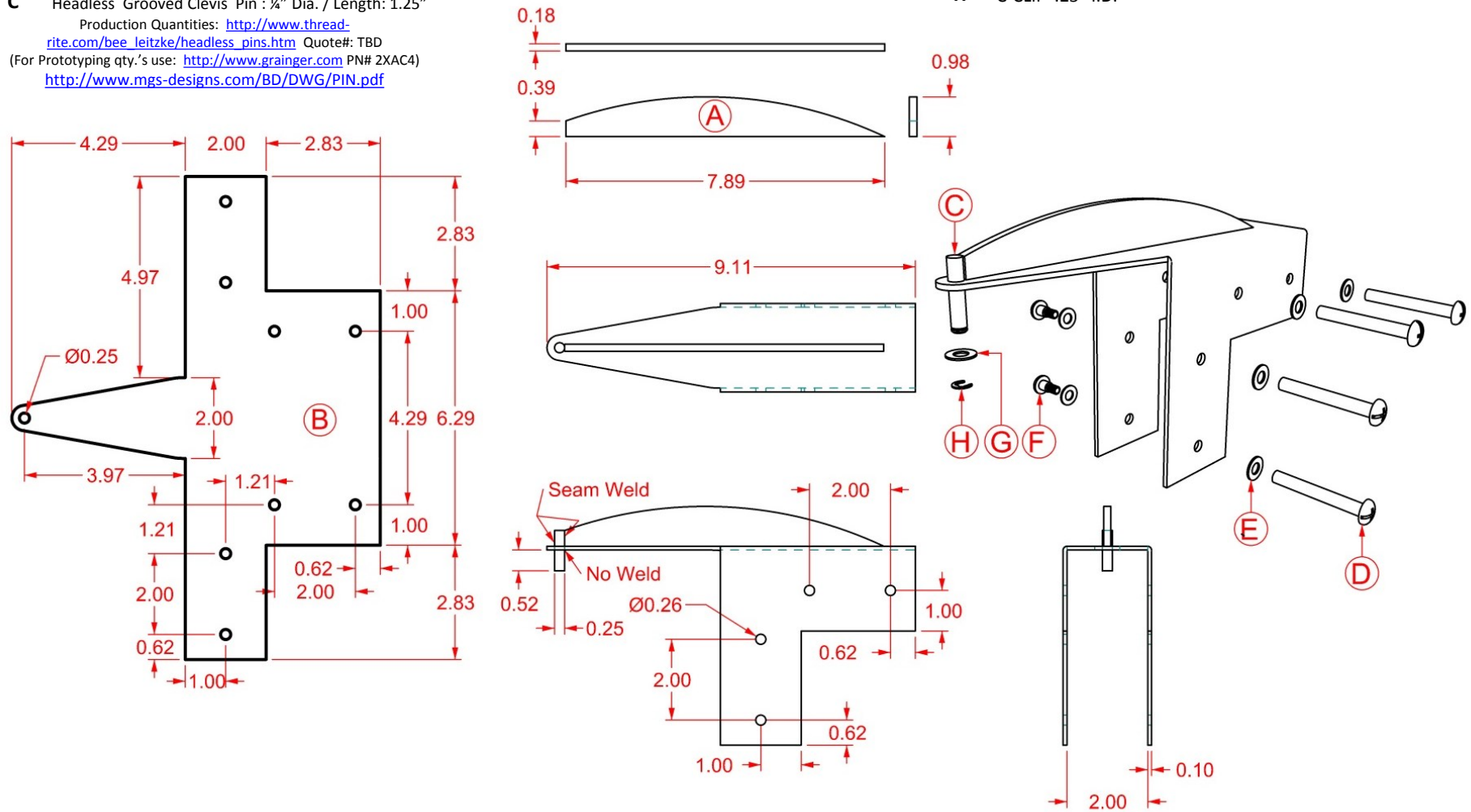
F BoltDepot.com PN#: 14359

Diameter: 1/4 shoulder (#10-24 thread)

<http://www.boltdepot.com/product.aspx?cc=69&cs=251&cm=7&cd=1824>

G Washer .25" I.D. .50" O.D.

H C-CLIP .25" I.D.



Notes:

1. Inside tack / seam weld whenever possible.
2. Break all corners and edges

Download 3D Model of Assy Here: <http://www.mgs-designs.com/BD/DWG/Levi-IUFFMBrevB.igs>

Revision: C /9-24-10

Levi's Document Link: <http://www.mgs-designs.com/BD/DWG/Levi-IUFFMBrevB.pdf>

Assy: Flip Fixture

Sub-Assy: Inside Upper Flip Fixture Mounting Bracket

A Stress Plate Qty:1 7ga. (.1793") Sheet

DXF Link: www.mgs-designs.com/BD/CNC/levis003.dxf

B Main Plate (.093") Sheet

DXF Link: www.mgs-designs.com/BD/CNC/levis002.dxf

C Headless Grooved Clevis Pin : 1/4" Dia. / Length: 1.25"

Production Quantities: http://www.thread-rite.com/bee_leitzke/headless_pins.htm Quote#: TBD
(For Prototyping qty.'s use: <http://www.grainger.com> PN# 2XAC4)
<http://www.mgs-designs.com/BD/DWG/PIN.pdf>

D BoltDepot.com PN#: 14304

Diameter: 1/4 barrel (#10-24 thread) 2" Long
<http://www.boltdepot.com/product.aspx?cc=69&cs=247&cm=7&cd=1818>

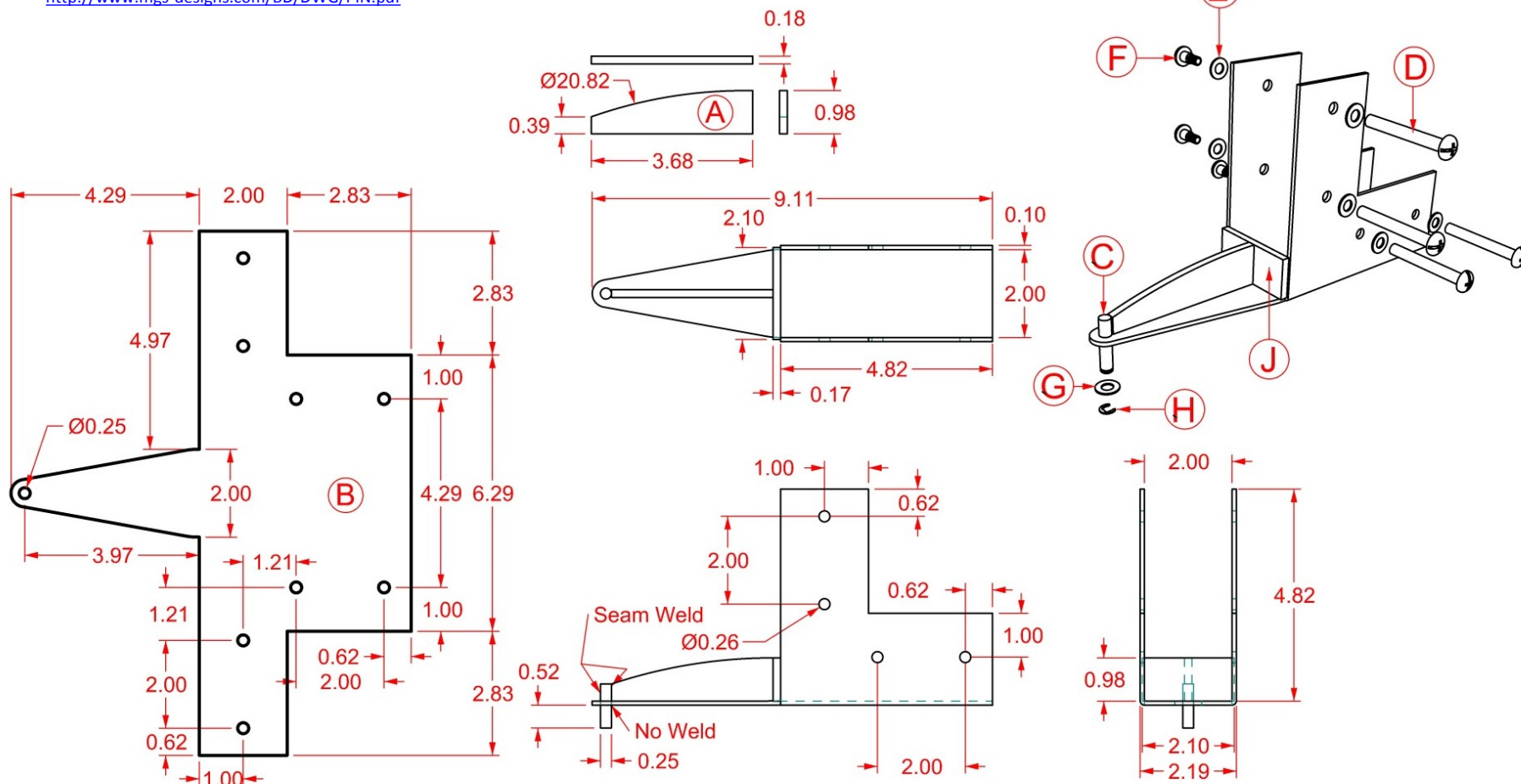
E Washer .25" I.D. .032" thick

F BoltDepot.com PN#: 14359

Diameter: 1/4 shoulder (#10-24 thread)
<http://www.boltdepot.com/product.aspx?cc=69&cs=251&cm=7&cd=1824>

G Washer .25" I.D. .50" O.D.

H C-CLIP .25" I.D.



Notes:

1. Inside tack / seam weld whenever possible.
2. Break all corners and edges

Download 3D Model of Assy Here: <http://www.mgs-designs.com/BD/DWG/Levi-ILFFMBrevB.igs>

Revision: C /9-24-10

Levi's

Document Link: <http://www.mgs-designs.com/BD/DWG/Levi-ILFFMBrevB.pdf>

Assy: Flip Fixture

Sub-Assy: Inside Lower Flip Fixture Mounting Bracket

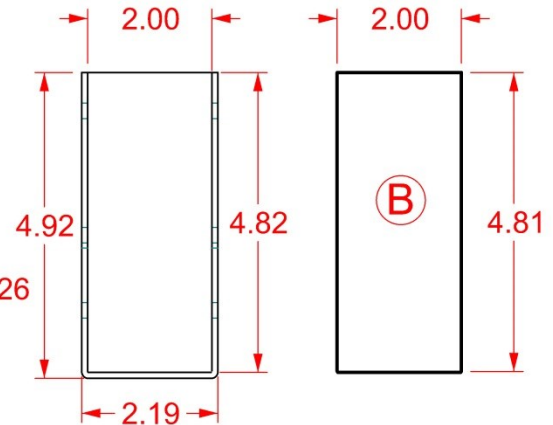
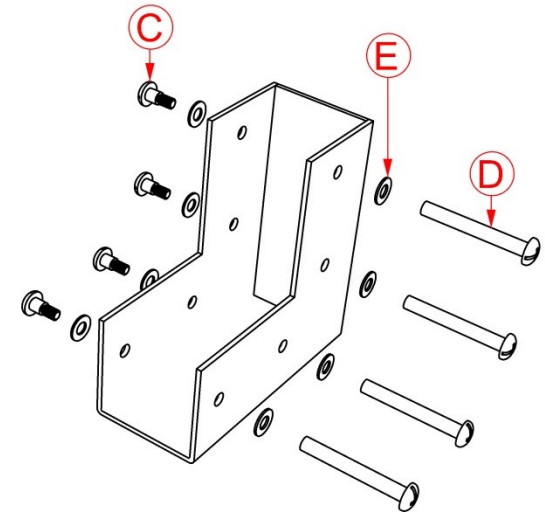
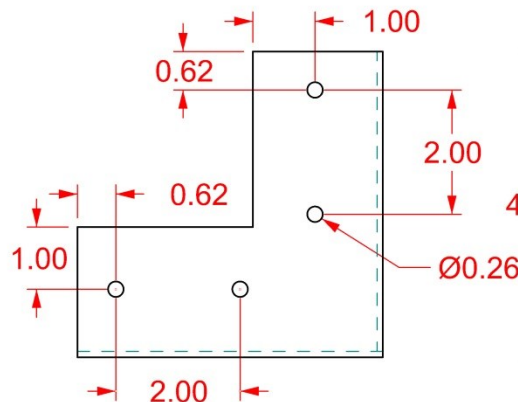
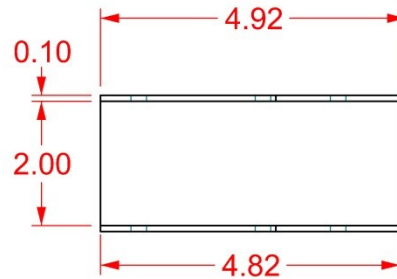
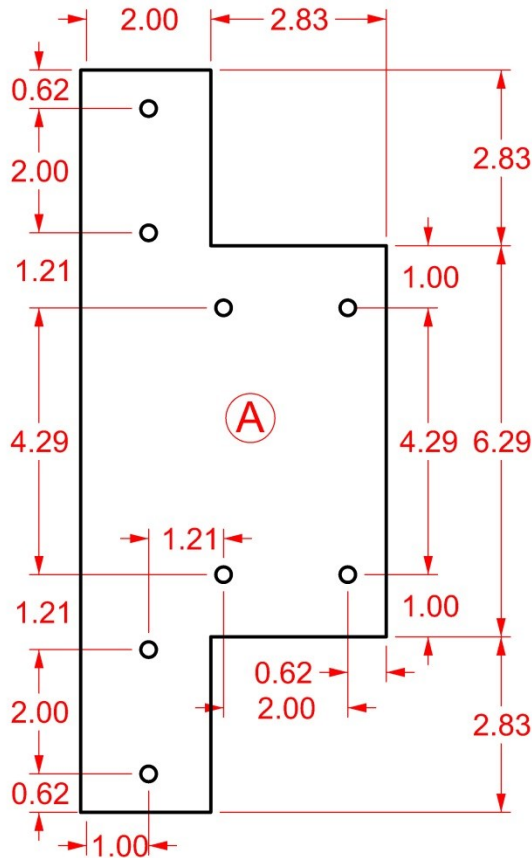
A Main Plate (.093") Sheet
DXF Link: www.mgs-designs.com/BD/CNC/levis004.dxf

B Back Plate (.093") Sheet
DXF Link: www.mgs-designs.com/BD/CNC/levis005.dxf

C BoltDepot.com PN#: 14304
Diameter: 1/4 barrel (#10-24 thread) 2" Long
<http://www.boltdepot.com/product.aspx?cc=69&cs=247&cm=7&cd=1818>

D BoltDepot.com PN#: 14359
Diameter: 1/4 shoulder (#10-24 thread)
<http://www.boltdepot.com/product.aspx?cc=69&cs=251&cm=7&cd=1824>

E Washer .25" I.D. .032" thick



Notes:

1. Inside tack / seam weld whenever possible.
2. Break all corners and edges

Download 3D Model of Assy Here: <http://www.mgs-designs.com/BD/DWG/Levi-OFFCBrevB.igs>

Revision: B /9-14-10

Levi's Document Link: <http://www.mgs-designs.com/BD/DWG/Levi-OFFCBrevB.pdf>

Assy: Flip Fixture

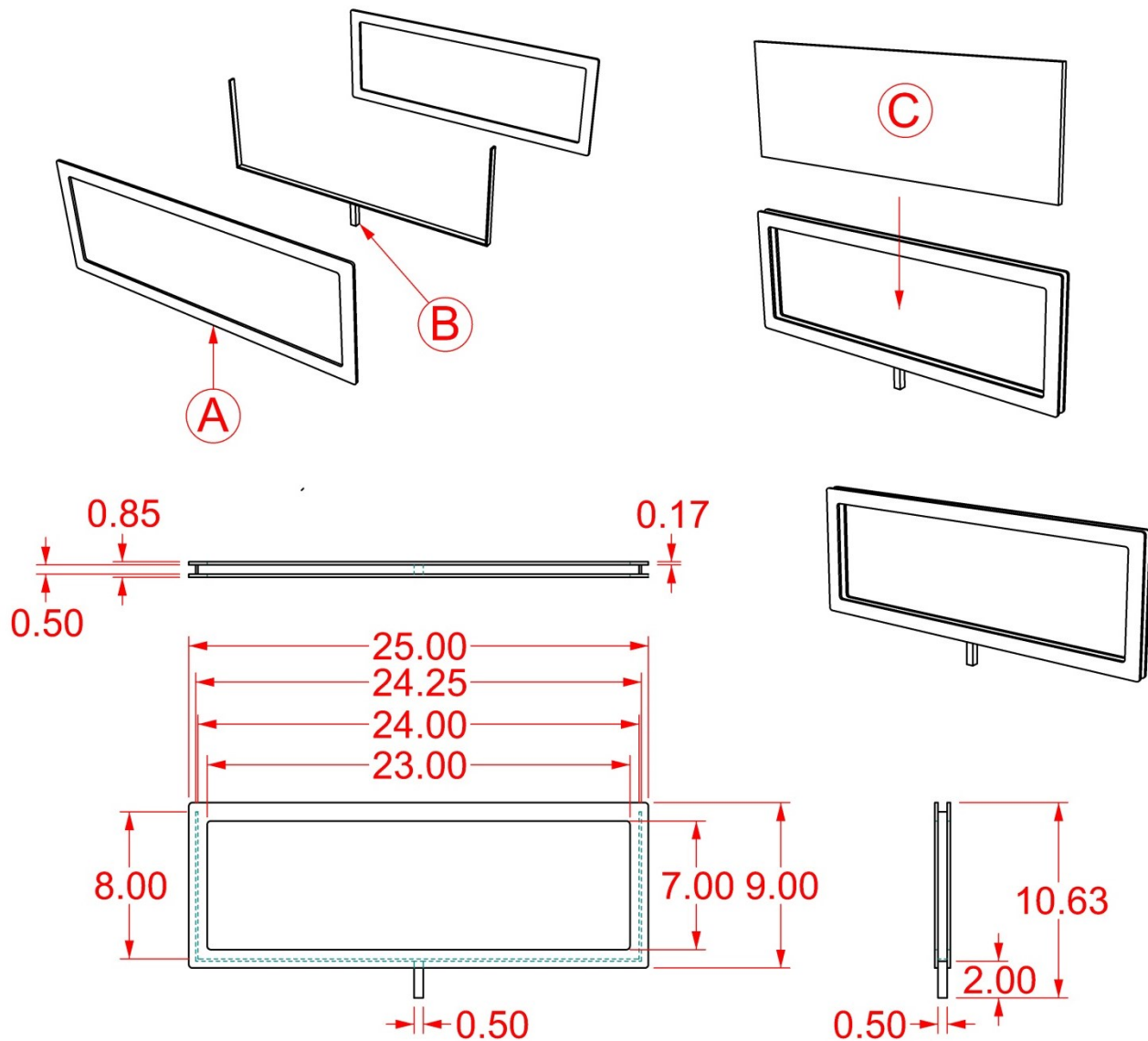
Sub-Assy: Outer Flip Fixture Corner Brackets

A Sign Frame Plate - Qty:1 7ga. (.1793") Sheet

DXF Link: www.mgs-designs.com/BD/CNC/levis008.dxf

B .5"x.5"x2" long sq. bar

C Homasote 24"x6"x.5"



Notes:

1. Inside tack / seam weld whenever possible.
2. Break all corners and edges

Download 3D Model of Assy Here: <http://www.mgs-designs.com/BD/DWG/FFSIGN.igs>

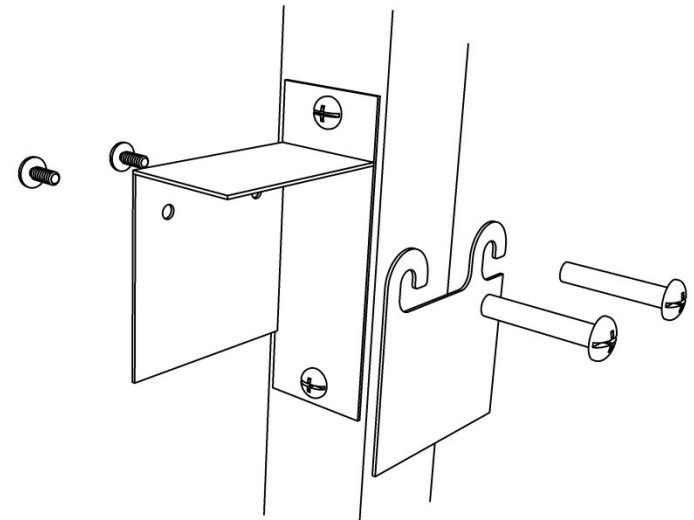
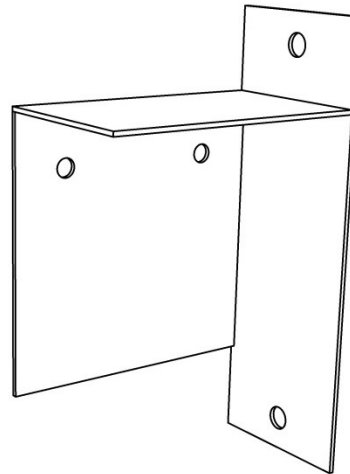
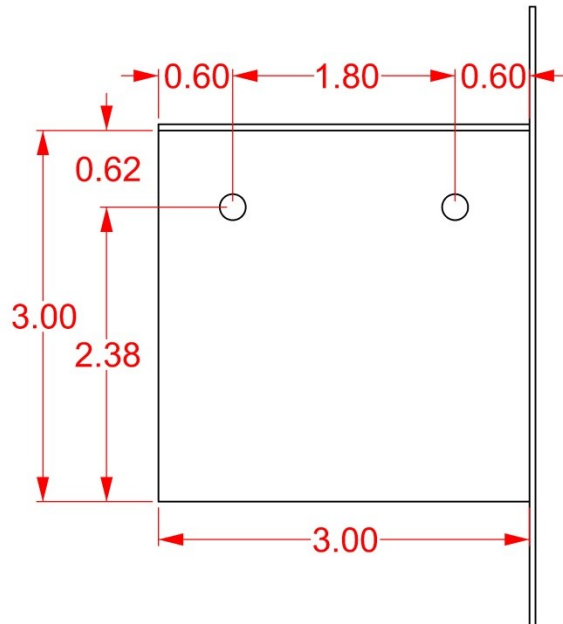
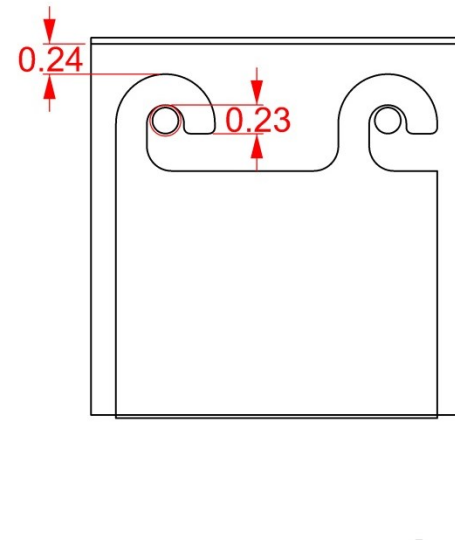
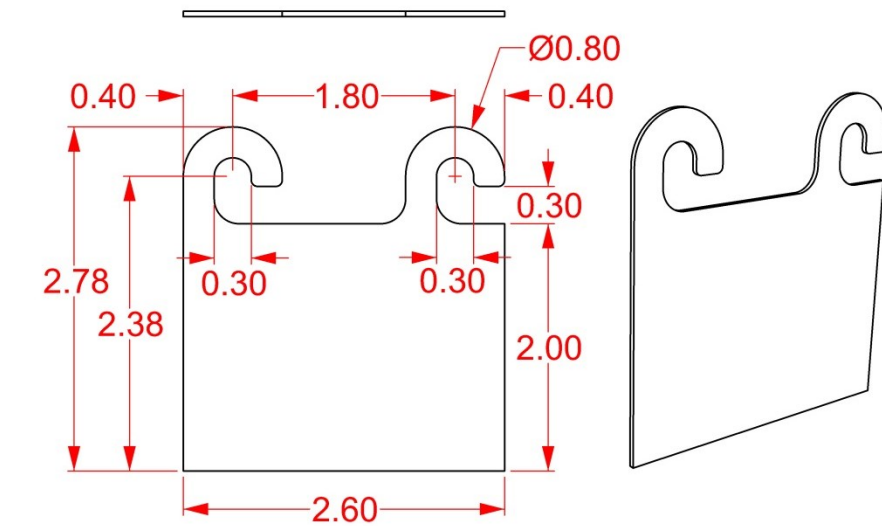
Revision: A /9-1-10

Levi's

Document Link: <http://www.mgs-designs.com/BD/DWG/FFSIGN.pdf>

Assy: Flip Fixture

Sub-Assy: Top Sign Holder



Download 3D Model of Assy Here: <http://www.mgs-designs.com/BD/DWG/cardholder.igs>

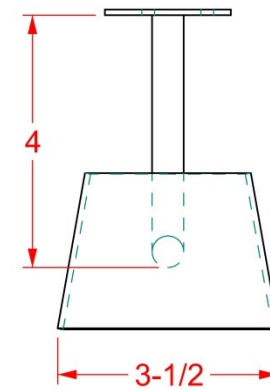
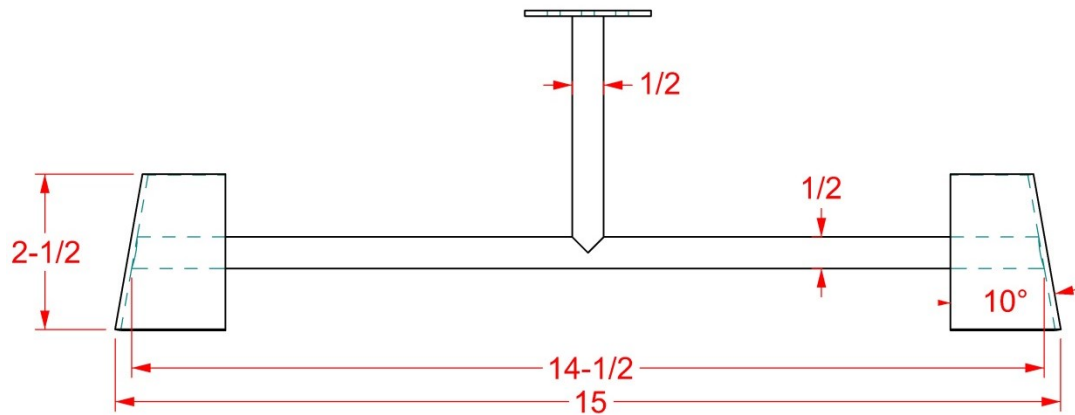
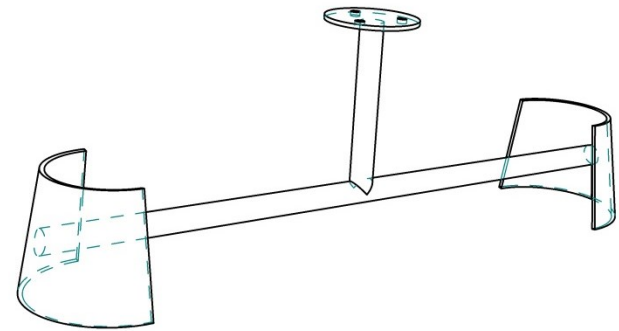
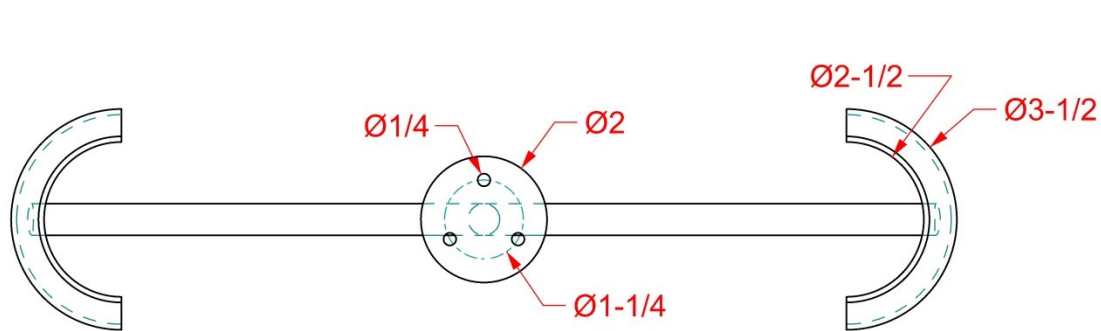
Revision: A /10-12-10

Levi's

Document Link: <http://www.mgs-designs.com/BD/DWG/cardholder.pdf>

Assy: Flip Fixture

Sub-Assy: Card Holder



Download 3D Model of Assy Here: <http://www.mgs-designs.com/BD/DWG/panthanger.igs>

Revision: A /10-12-10

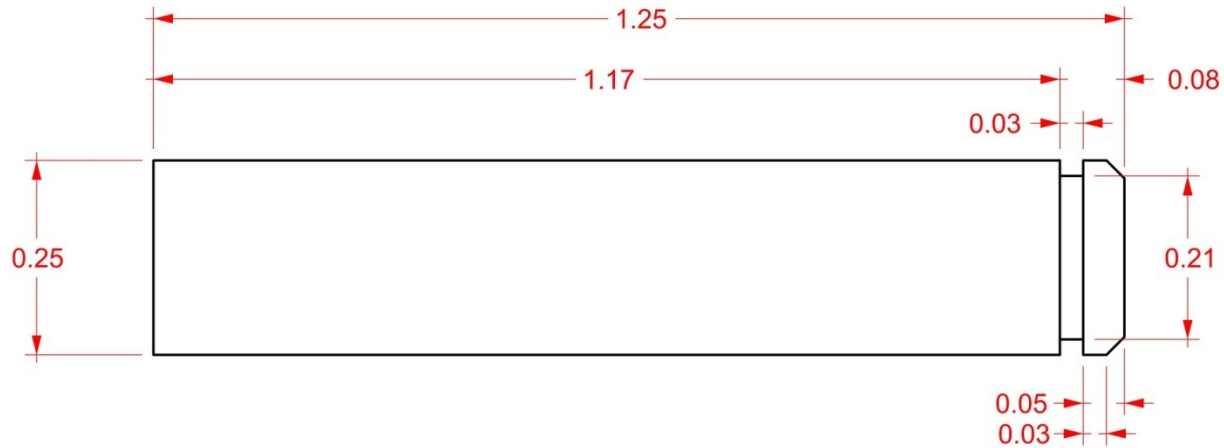
Levi's

Document Link: <http://www.mgs-designs.com/BD/DWG/panthanger.pdf>

Assy: Flip Fixture

Sub-Assy: Pant Holder

Production use: 1,000 / 5,000 Estimate (non-re occurring)



Notes:

1. Low Carbon Steel
2. No Finish (As machined)
3. Supplier: James Sover
trcontact@thread-rite.com

773-992-2290

(For Prototyping qty.'s use: <http://www.grainger.com> PN# 2XAC4)

1,000 \$.7365 ea

2,500 .3786

5,000 .2421

Del 2-4 weeks

Revision: A /9-23-10

Levi's

Document Link: <http://www.mgs-designs.com/BD/DWG/PIN.pdf>

Assy: Flip Fixture

Sub-Assy: Dowel Pin Swivel – Reference for quote

CART ASSEMBLY

- <http://www.mgs-designs.com/BD/DWG/CARTassy.pdf>
- <http://www.mgs-designs.com/BD/DWG/CARTassy.igs>

CART SUB-ASSY / DETAILS

(All DXF Flat patterns are linked from within PDF file Drawings)

- Base
 - <http://www.mgs-designs.com/BD/DWG/CARTBASE.pdf>
 - <http://www.mgs-designs.com/BD/DWG/CARTBASE.igs>
- Wood Cubby
 - <http://www.mgs-designs.com/BD/DWG/CARTCUBBY.pdf>
- Cast Signs
 - <http://www.mgs-designs.com/BD/DWG/castsignage1.pdf>
 - <http://www.mgs-designs.com/BD/DWG/caststraight.igs>
 - <http://www.mgs-designs.com/BD/DWG/castrelaxed.igs>
 - <http://www.mgs-designs.com/BD/DWG/castskinny.igs>
 - <http://www.mgs-designs.com/BD/DWG/castboot.igs>



Notes:

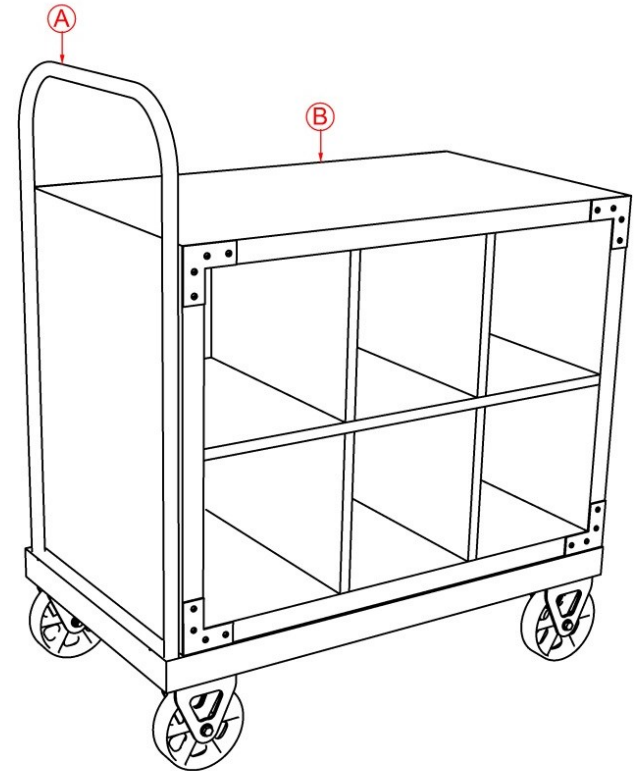
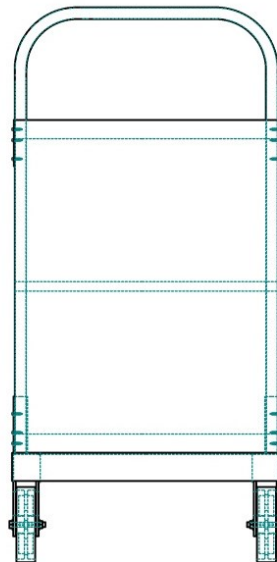
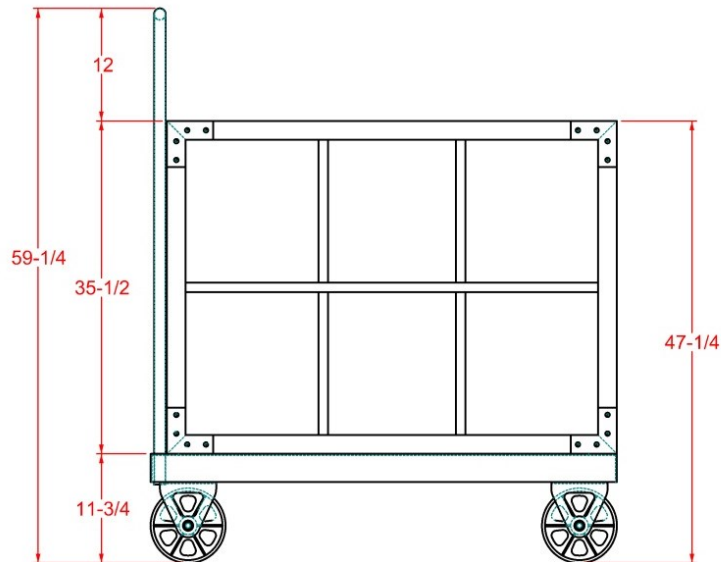
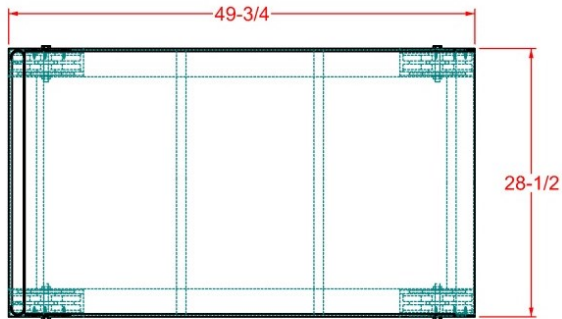


A

Cart Base

DWG Link: <http://www.mgs-designs.com/BD/DWG/CARTBASE.pdf>**B**

Cart Cubby

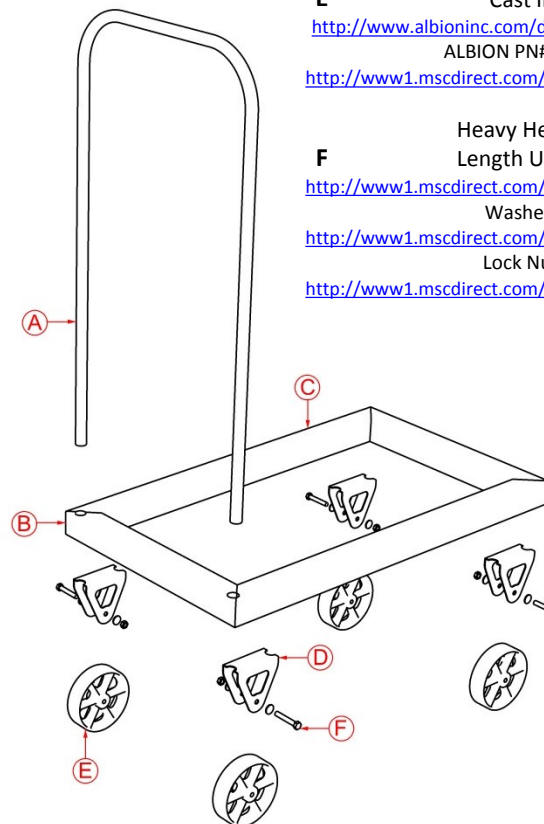
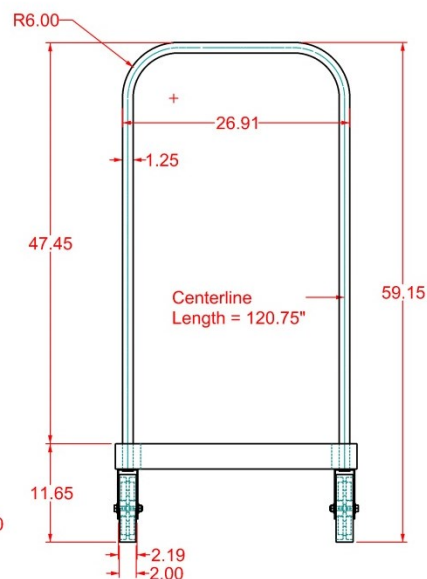
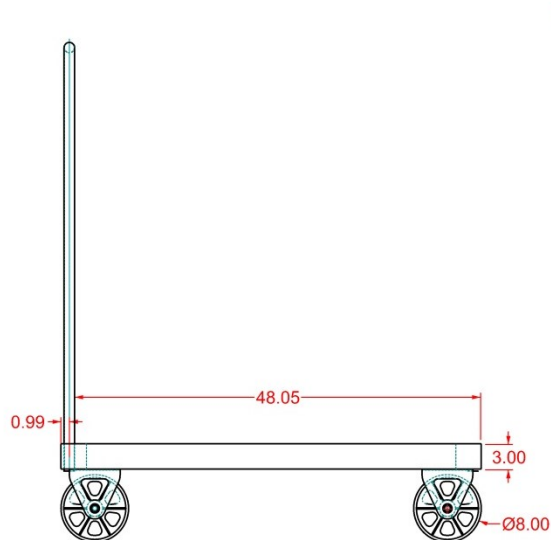
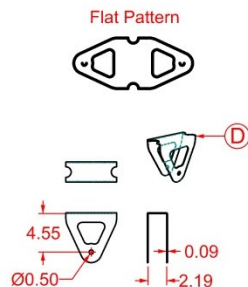
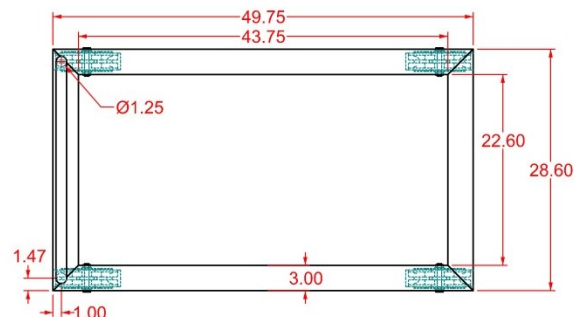
DWG Link: <http://www.mgs-designs.com/BD/DWG/CARTCUBBY.pdf>Download 3D Model of Assy Here: www.mgs-designs.com/BD/DWG/CARTassy.igs

Revision: B /9-24-10

Levi'sDocument Link: <http://www.mgs-designs.com/BD/DWG/CARTassy.pdf>

Assy: Cart Fixture

Sub-Assy: CART DISPLAY ASSY.



- A** 1.25" O.D. x 120.75" Long
- B** 3" x 3" Sq. Tube x 28.6" Long
- C** 3" x 3" Sq. Tube x 49.75" Long
- D** Wheel Bracket Qty: 4
DXF Link: www.mgs-designs.com/BD/CNC/levis009.dxf
- E** Cast Iron Wheel 8"
http://www.albioninc.com/docs/products/wh_ca_8000.pdf
ALBION PN#: CA08201-12
<http://www1.msdirect.com/CGI/NNSRIT?PMAKA=00996702>
- F** Heavy Hex 1/2-13 Qty.: 4
Length Under Head: 3-1/2
<http://www1.msdirect.com/CGI/NNSRIT?PMAKA=67463489>
Washer: Qty.: 8
<http://www1.msdirect.com/CGI/NNSRIT?PMAKA=67489724>
Lock Nut: Qty.: 4
<http://www1.msdirect.com/CGI/NNSRIT?PMAKA=87922076>

Notes:

1. Inside tack / seam weld whenever possible.
2. Break all corners and edges

Download 3D Model of Assy Here: <http://www.mgs-designs.com/BD/DWG/CARTBASE.igs>

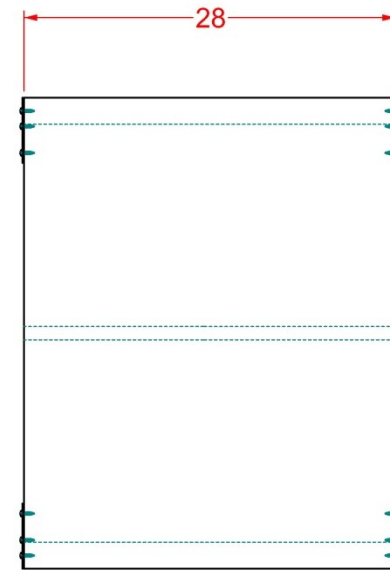
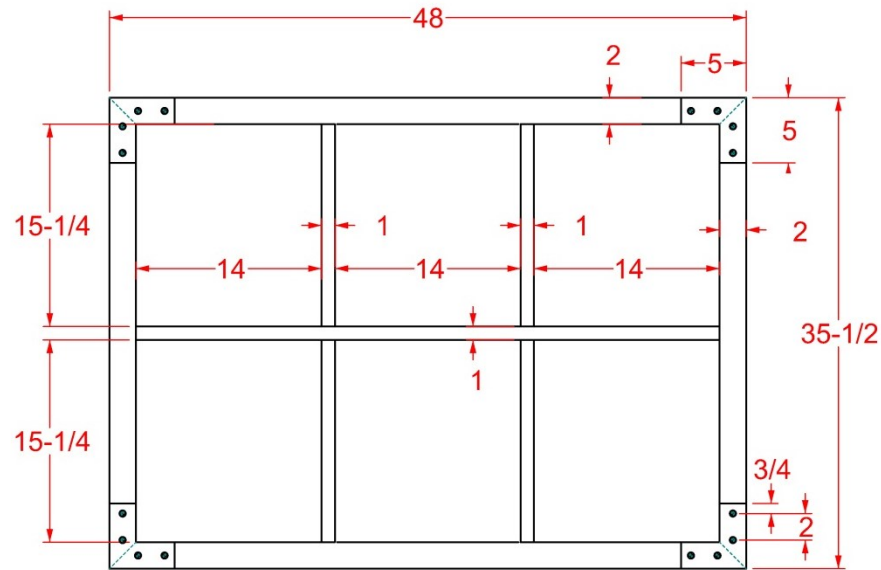
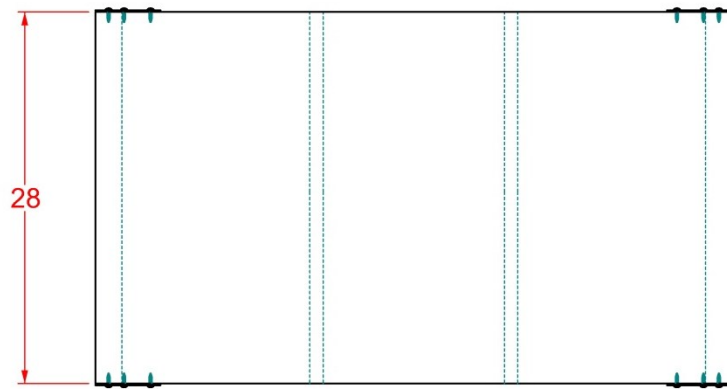
Revision: B /9-14-10

Levi's

Document Link: <http://www.mgs-designs.com/BD/DWG/CARTBASE.pdf>

Assy: Cart Fixture

Sub-Assy: CART BASE SUB-ASSY



Notes:

1. All Laminate Grain Exposed on Cubby Faces.
2. No Sharp Metal Edges or Corners

Revision: B /9-24-10

Levi's

Document Link: <http://www.mgs-designs.com/BD/DWG/CARTCUBBY.pdf>

Assy: Cart Fixture

Sub-Assy: CART CUBBY SUB-ASSY

A

Straight

<http://www.mgs-designs.com/BD/DWG/caststraight.igs>

B

Relaxed

<http://www.mgs-designs.com/BD/DWG/castrelaxed.igs>

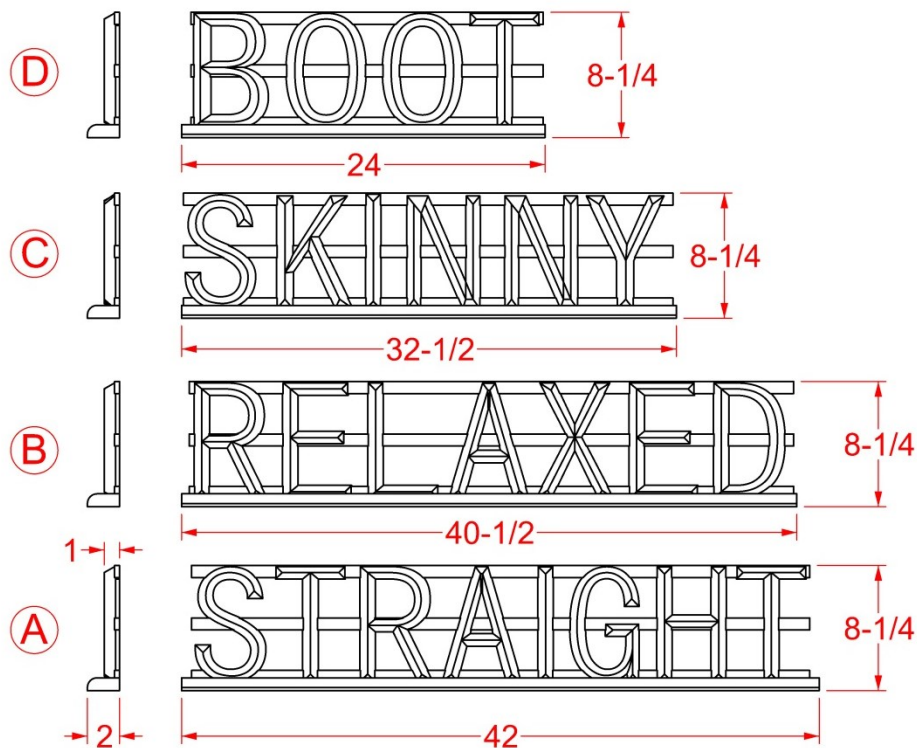
C

Skinny

<http://www.mgs-designs.com/BD/DWG/castskinny.igs>

D

Boot

<http://www.mgs-designs.com/BD/DWG/castboot.igs>

Revision: B /9-24-10

Notes:

1. Cast Steel Finish

Levi's

Document Link: <http://www.mgs-designs.com/BD/DWG/castsignage1.pdf>

Assy: Cart Signage

Sub-Assy: Cast Cart Signage

LARGE & SMALL TABLE ASSEMBLY

- <http://www.mgs-designs.com/BD/DWG/ParsonsAssy.pdf>
- <http://www.mgs-designs.com/BD/DWG/ParsonsAssy.igs>

LARGE TABLE ASSEMBLY

- <http://www.mgs-designs.com/BD/DWG/ParsonsLarge.pdf>
- <http://www.mgs-designs.com/BD/DWG/ParsonsLarge.igs>

SMALL TABLE ASSEMBLY

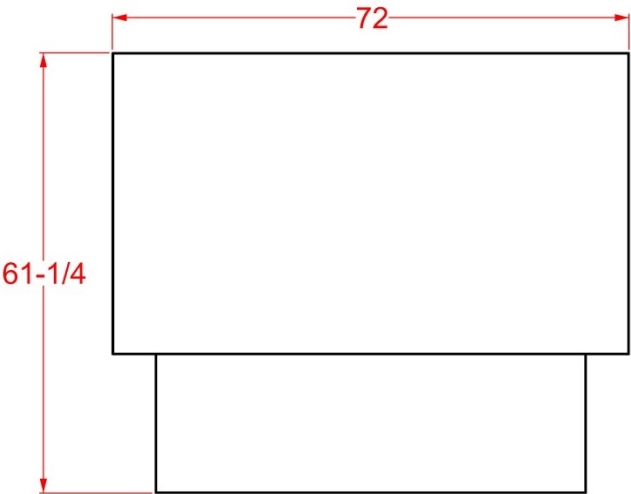
- <http://www.mgs-designs.com/BD/DWG/ParsonsSmall.pdf>
- <http://www.mgs-designs.com/BD/DWG/ParsonsSmall.igs>



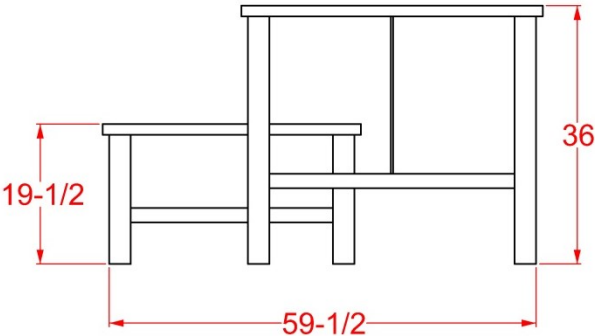
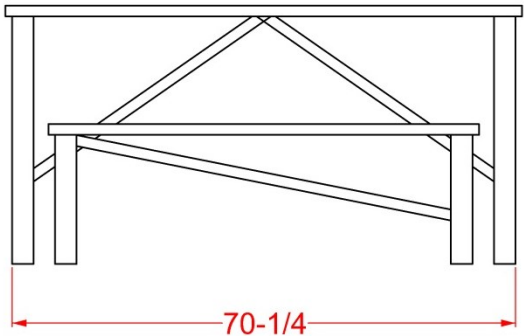
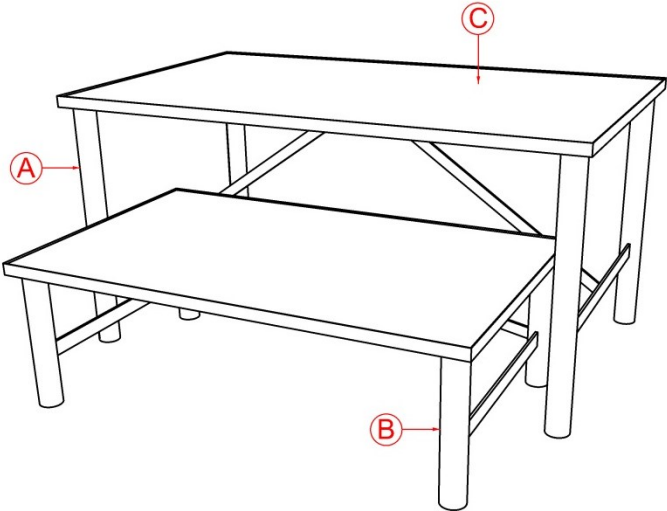
Notes:



A Large Parsons Table
<http://www.mgs-designs.com/BD/DWG/ParsonsLarge.pdf>



B Small Parsons Table
<http://www.mgs-designs.com/BD/DWG/ParsonsSmall.pdf>



- Notes:
1. No Paint – Natural Steel Finish
 2. No Sharp Metal Edges or Corners

Download 3D Model of Assy Here: <http://www.mgs-designs.com/BD/DWG/ParsonsAssy.igs> Revision: C /10-4-10

	Levi's		Document Link: http://www.mgs-designs.com/BD/DWG/ParsonsAssy.pdf
	Assy: Parsons Table	Sub-Assy: Parsons Table - Assy	

A 3" O.D. Tube 34.5" Long (Qty.4)

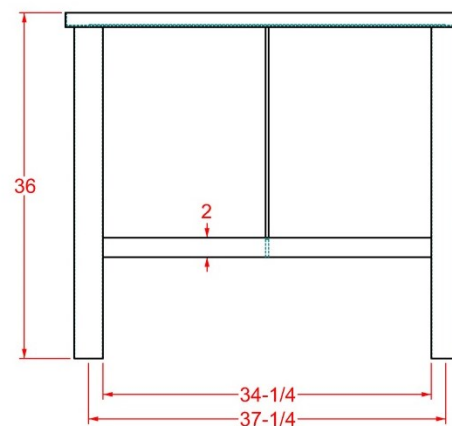
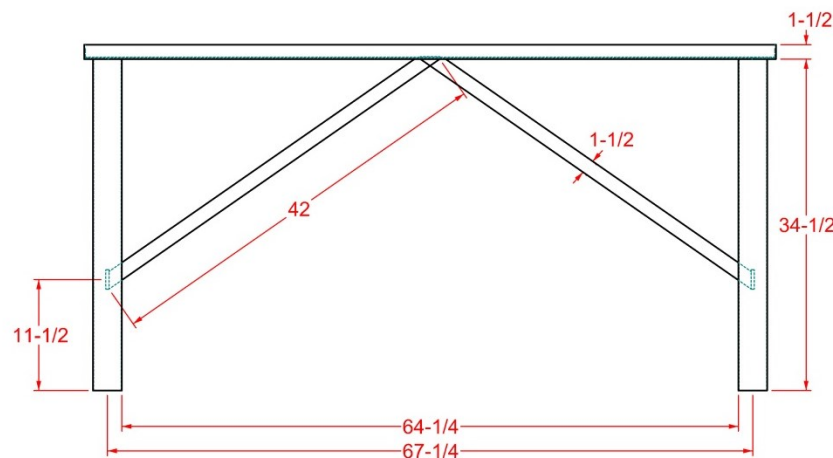
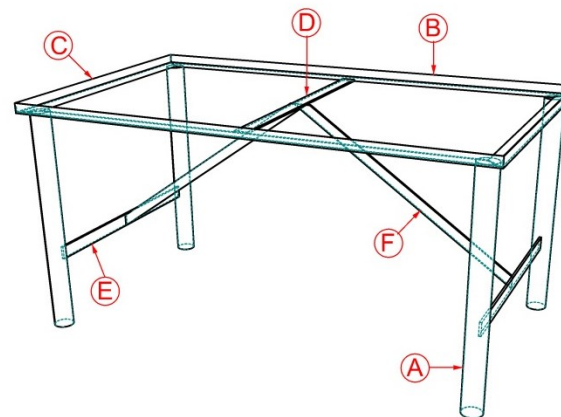
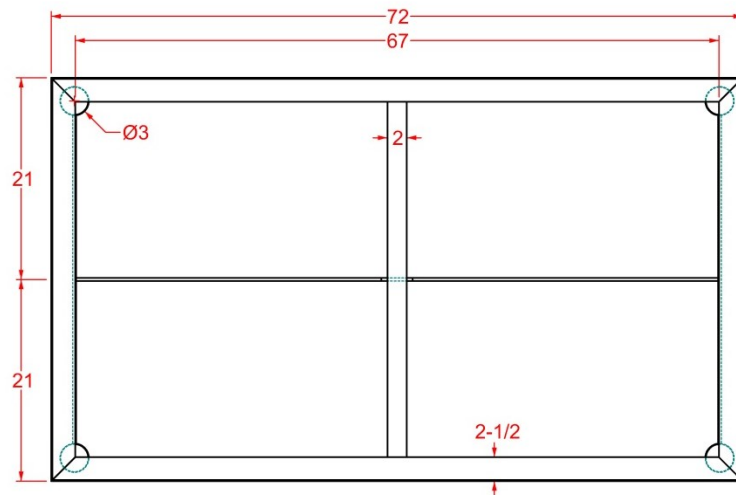
C Angle Iron: 2.5"x1.5" – 42" Long (Qty.2)

E 2" Bar x .25" or .325" thick CRS

B Angle Iron: 2.5"x1.5" – 72" Long (Qty.2)

D Angle Iron: 2.5"x1.5" – 37" Long (Qty.1)

F 1.5" Bar x .25" or .325" thick CRS



Notes:

1. No Paint – Natural Steel Finish
2. No Sharp Metal Edges or Corners

Download 3D Model of Assy Here: <http://www.mgs-designs.com/BD/DWG/ParsonsLarge.igs>

Revision: C /10-4-10

Levi's

Document Link: <http://www.mgs-designs.com/BD/DWG/ParsonsLarge.pdf>

Assy: Parsons Table

Sub-Assy: Parsons Table – Large Table

A 3" O.D. Tube 18" Long (Qty.4)

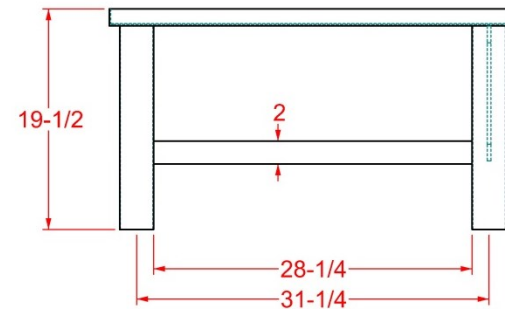
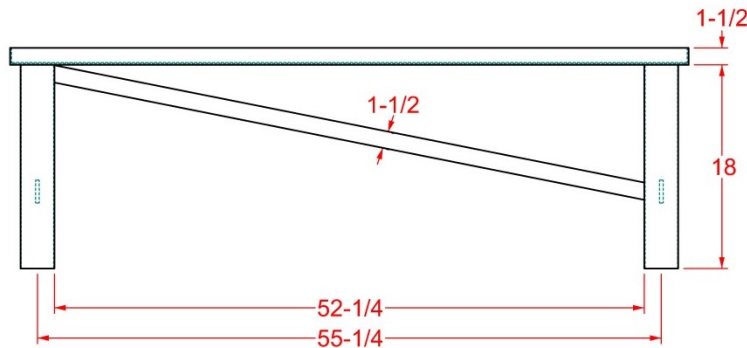
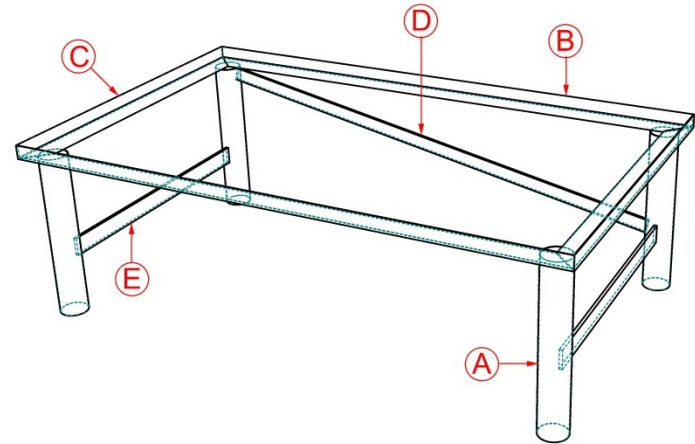
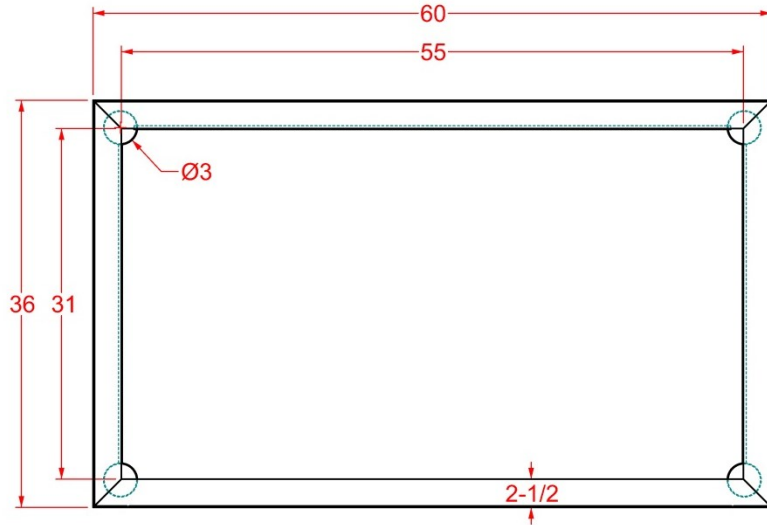
C Angle Iron: 2.5"x1.5" – 36" Long (Qty.2)

E 2" Bar x .25" or .325" thick CRS

B Angle Iron: 2.5"x1.5" – 60" Long (Qty.2)

D Angle Iron: 2.5"x1.5" – 31" Long (Qty.1)

F 1.5" Bar x .25" or .325" thick CRS



Notes:

1. No Paint – Natural Steel Finish
2. No Sharp Metal Edges or Corners

Download 3D Model of Assy Here: <http://www.mgs-designs.com/BD/DWG/ParsonsSmall.igs>

Revision: A /10-4-10

Levi's

Document Link: <http://www.mgs-designs.com/BD/DWG/ParsonsSmall.pdf>

Assy: Parsons Table

Sub-Assy: Parsons Table – Small Nesting Table



Standing Cubbies

- <http://www.mgs-designs.com/BD/DWG/LargeCubbys1.pdf> 14" Deep
- <http://www.mgs-designs.com/BD/DWG/LargeCubbys3.pdf> 28" Deep Open

Lighted 501 Assy

- <http://www.mgs-designs.com/BD/DWG/501lighted.pdf>
- <http://www.mgs-designs.com/BD/DWG/501lighted.igs>

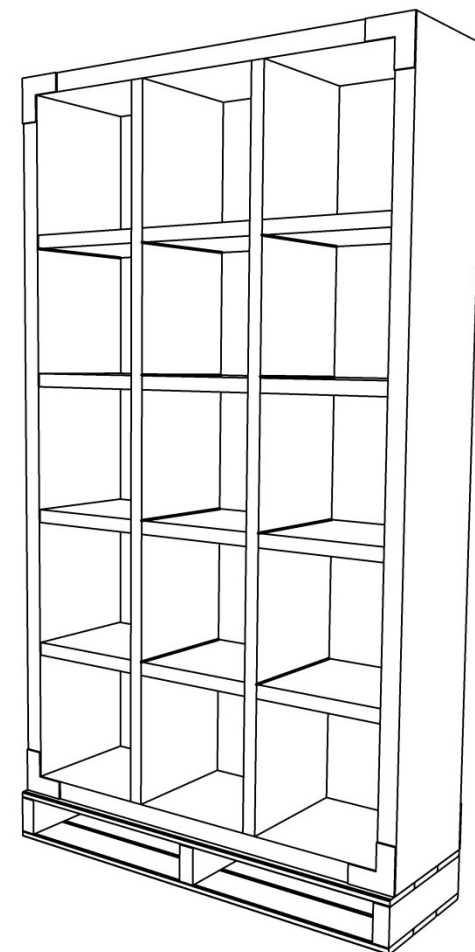
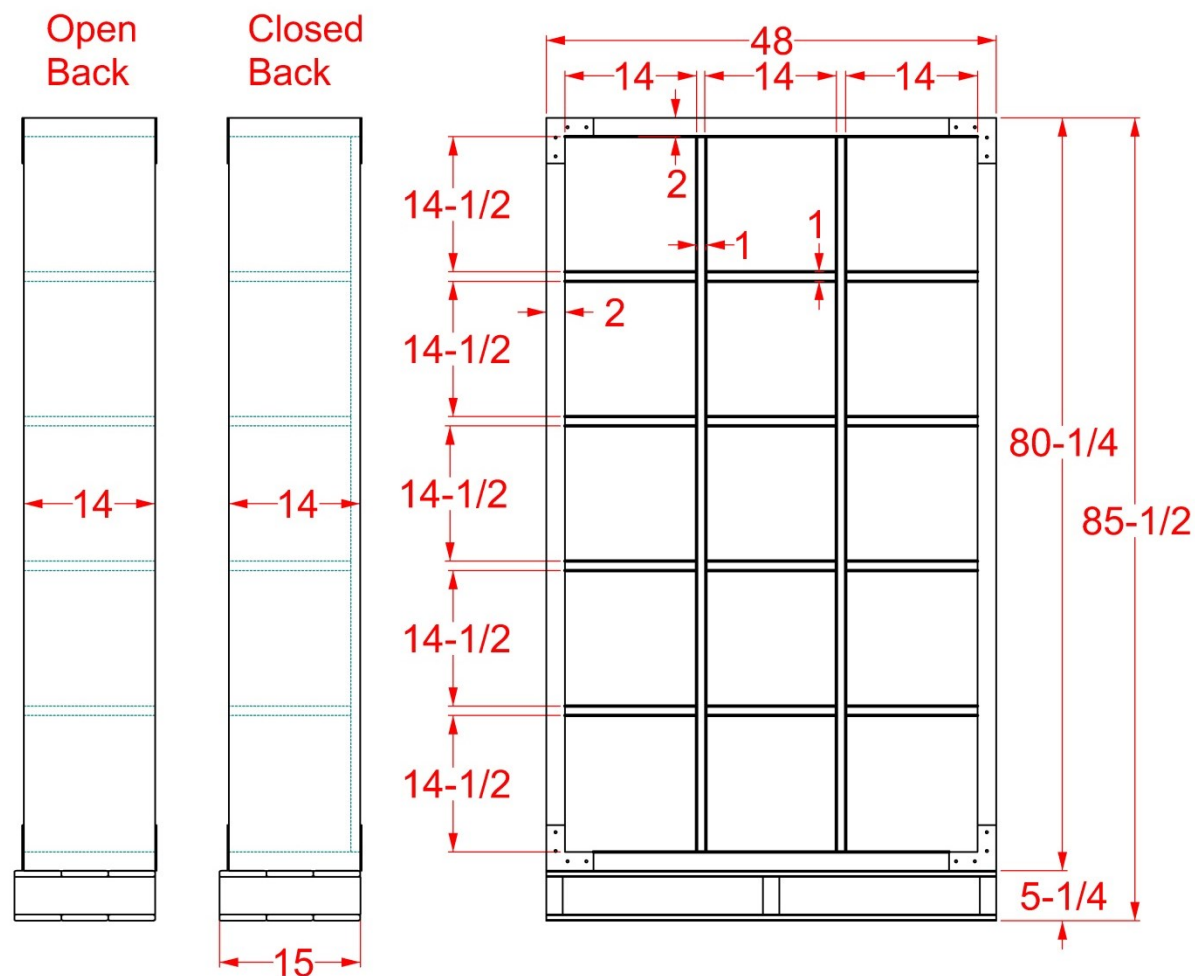
Artwork Frame

- <http://www.mgs-designs.com/BD/DWG/BackwallArt.pdf>

Small Back Wall Cast Signs

- <http://www.mgs-designs.com/BD/DWG/castsignage1.pdf>
- <http://www.mgs-designs.com/BD/DWG/caststraight.igs>
- <http://www.mgs-designs.com/BD/DWG/castrelaxed.igs>
- <http://www.mgs-designs.com/BD/DWG/castskinny.igs>
- <http://www.mgs-designs.com/BD/DWG/castboot.igs>





Edge Laminate Shown



Notes:

1. All Laminate Grain Exposed on Cubby Faces.
2. Metal fascia corner-plate brackets

Revision: A /9-20-10

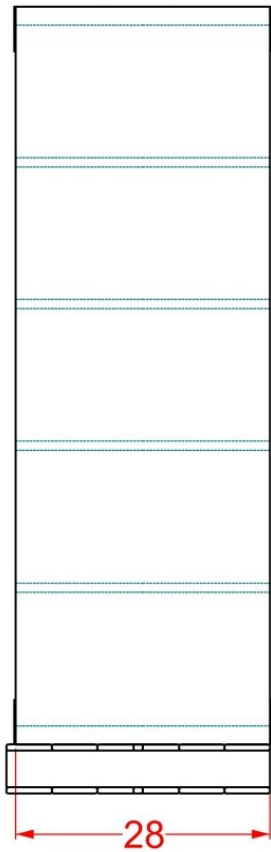
Levi's

Document Link: <http://www.mgs-designs.com/BD/DWG/LargeCubbys1.pdf>

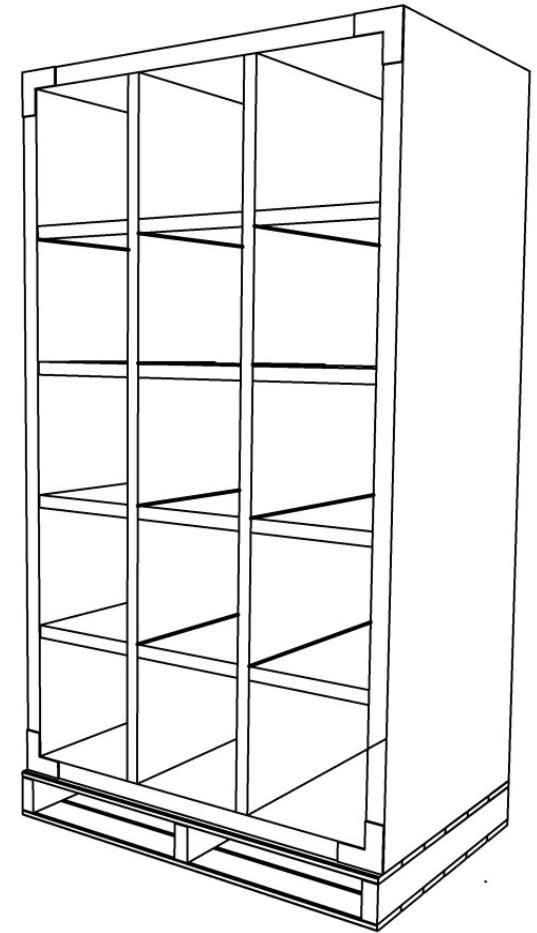
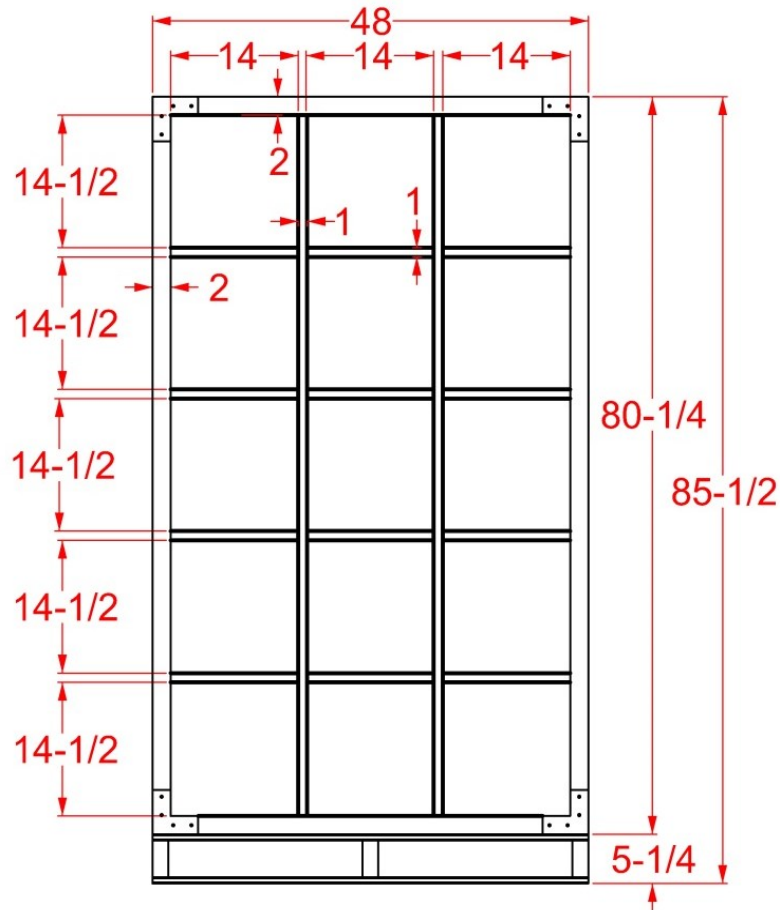
Assy: Large Cubby's

Sub-Assy: Large Cubby's – 14" Deep with and without Back

No Divider



Side View



Edge Laminate Shown



Notes:

1. All Laminate Grain Exposed on Cubby Faces.
2. Metal fascia corner-plate brackets

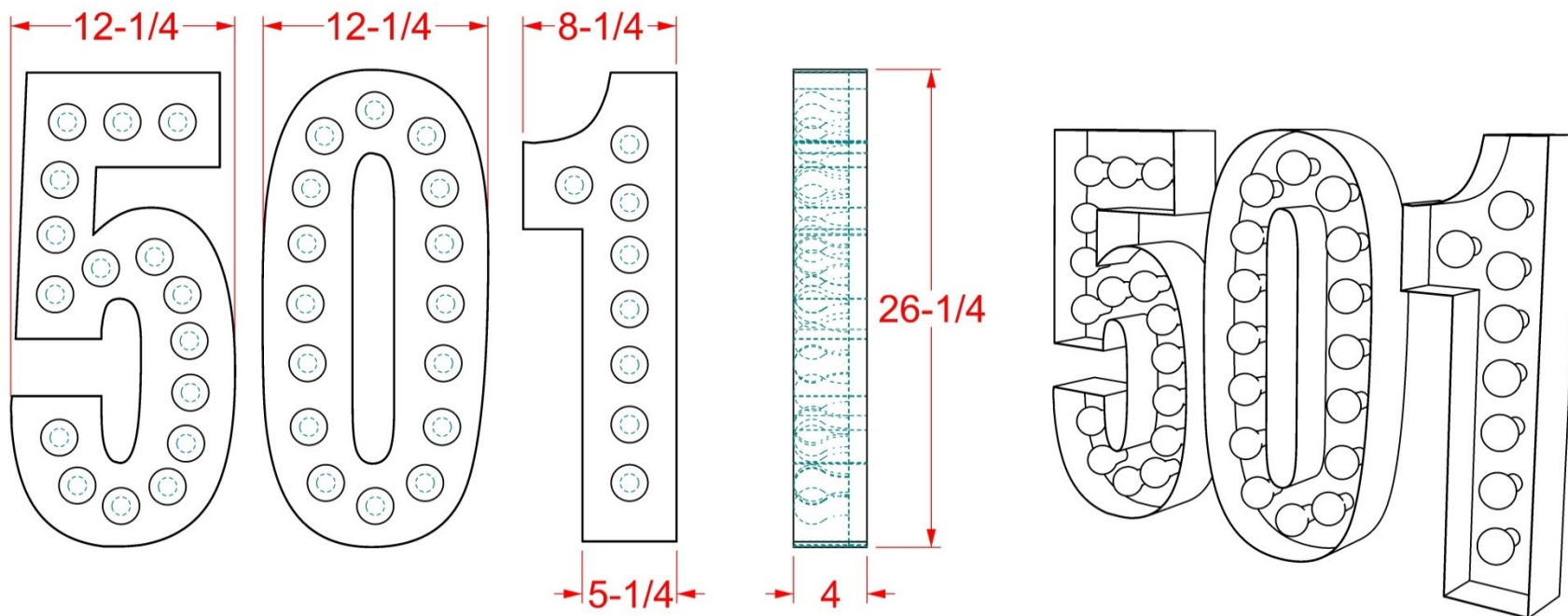
Revision: A /9-20-10

Levi's

Document Link: <http://www.mgs-designs.com/BD/DWG/LargeCubbys3.pdf>

Assy: Large Cubby's

Sub-Assy: Large Cubby – 28" Deep without divider



Notes:

1. No Paint – Natural Steel Finish

Download 3D Model of Assy Here: <http://www.mgs-designs.com/BD/DWG/501lighted.igs>

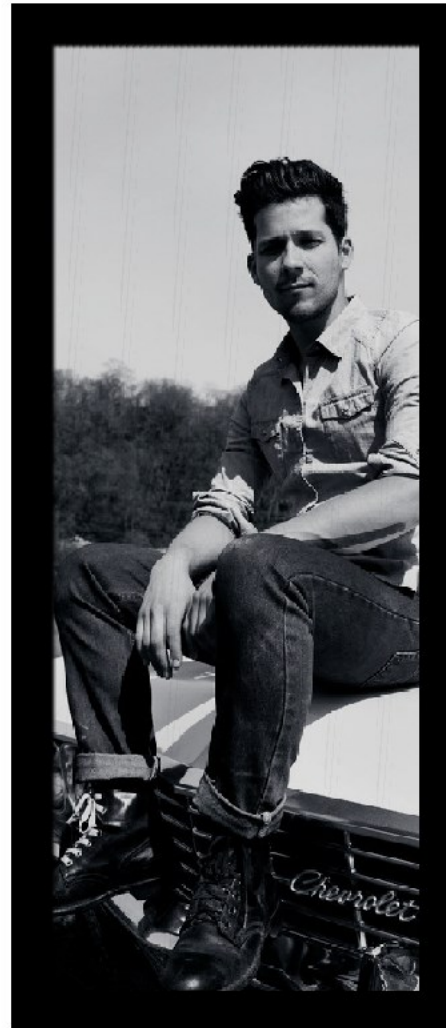
Revision: A /9-20-10

Levi's

Document Link: <http://www.mgs-designs.com/BD/DWG/501lighted.pdf>

Assy: Lighted 501

Sub-Assy: Lighted 501 Assy



108

47

4

Artwork Graphics Sources:

<https://levi.prismportal.com/?c=1577&k=b1269069b4>

M10034__MG_1976.tif

M10034_MG_9863_extension.tif

Notes:

1. Steel Frame
2. Powder Coat Flat Black

Revision: B /9-26-10

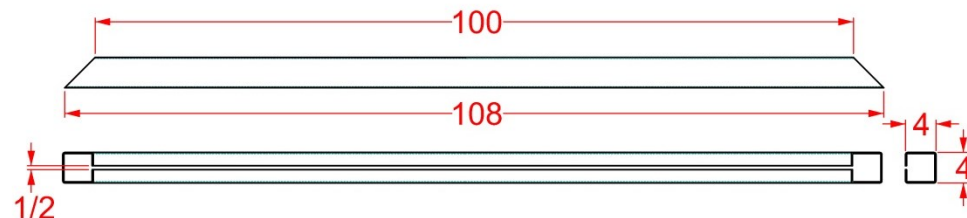
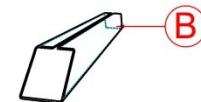
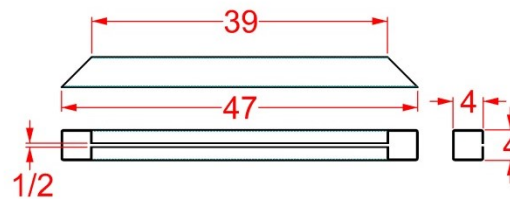
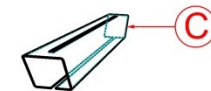
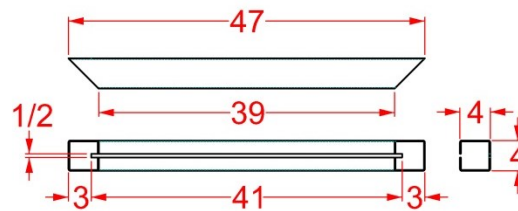
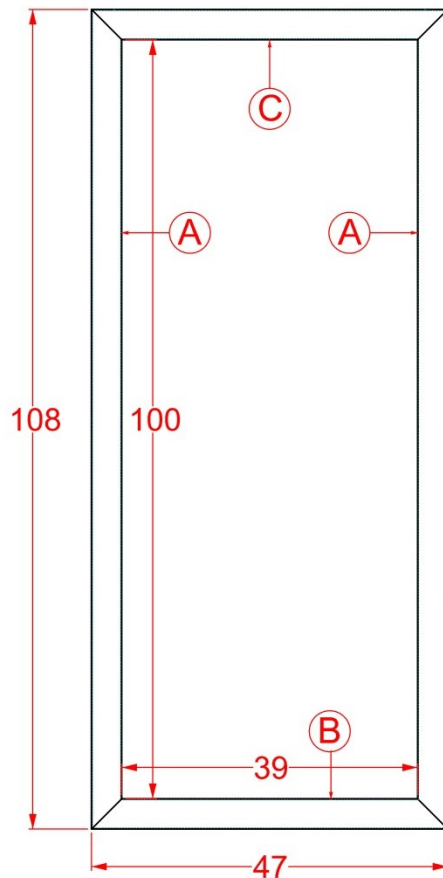
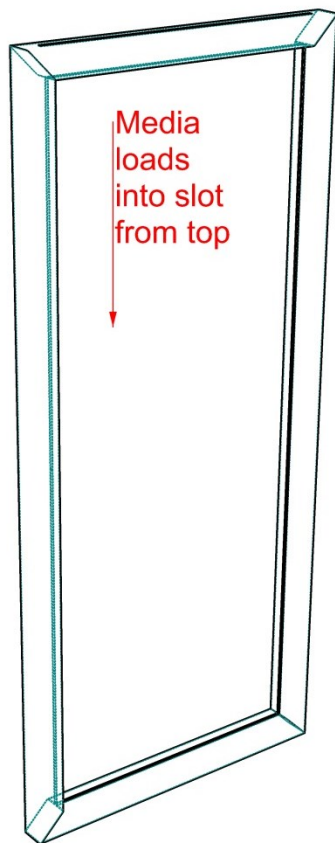
Levi's

Document Link: <http://www.mgs-designs.com/BD/DWG/BackwallArt.pdf>

Assy: Artwork Frame

Sub-Assy: Artwork Frame





Notes:

1. Steel Frame
2. Create .5" Channel (cut) into 4" Frame members.
3. Powder Coat Flat Black

Revision: A /10-13-10

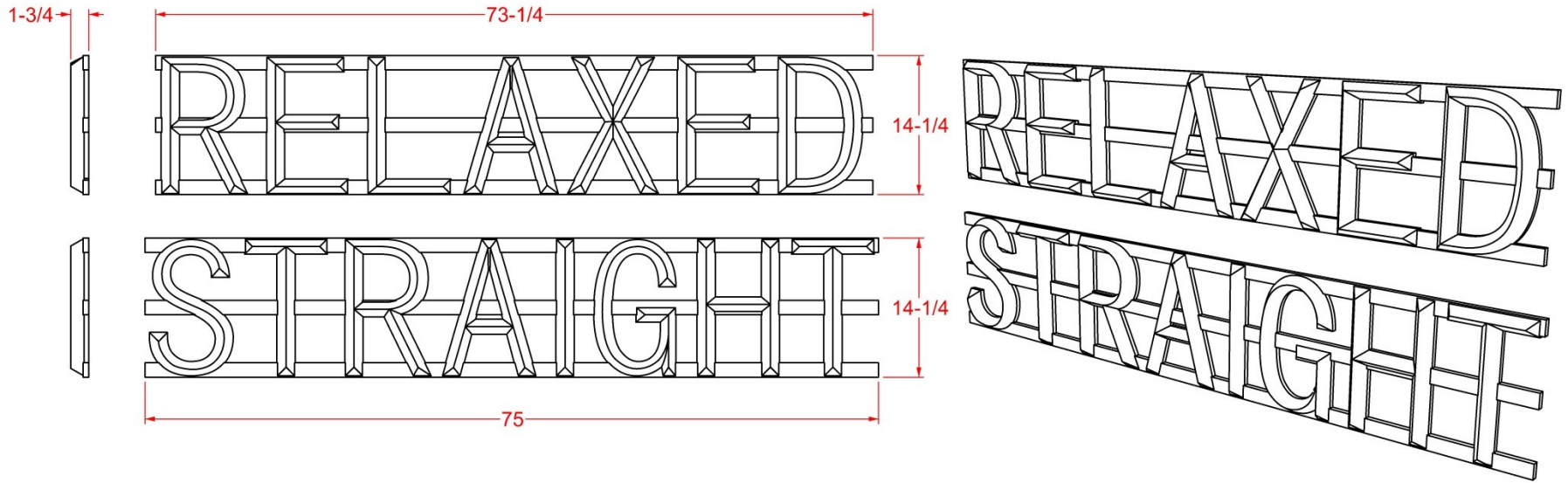
Levi's

Document Link: <http://www.mgs-designs.com/BD/DWG/artframebw.pdf>

Assy: Artwork Frame

Sub-Assy: Artwork Frame

OBSOLETE



Download 3D Model of Assy Here: <http://www.mgs-designs.com/BD/DWG/BackwallSign.igs>

Revision: B /9-28-10

Notes:

1. Wood or similar construction
2. Textured Cast Look

Levi's

Document Link: <http://www.mgs-designs.com/BD/DWG/BackwallSign.pdf>

Assy: Back Wall Signage

Sub-Assy: Back Wall Signage

A

Straight

<http://www.mgs-designs.com/BD/DWG/caststraight.igs>

B

Relaxed

<http://www.mgs-designs.com/BD/DWG/castrelaxed.igs>

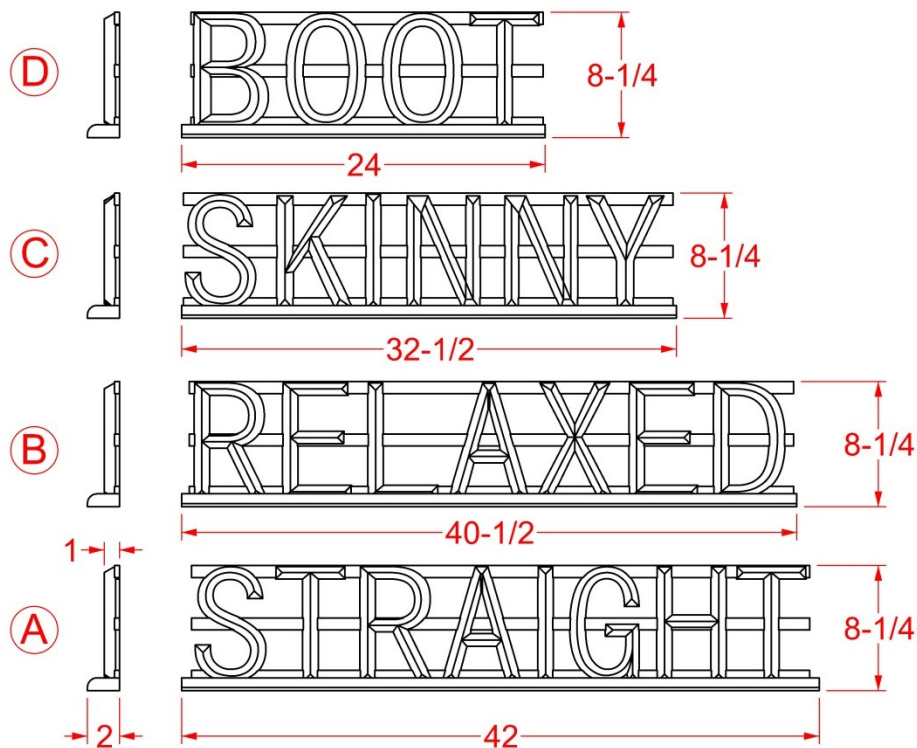
C

Skinny

<http://www.mgs-designs.com/BD/DWG/castskinny.igs>

D

Boot

<http://www.mgs-designs.com/BD/DWG/castboot.igs>

Revision: B /9-24-10

Notes:

1. Cast Steel Finish

Levi's

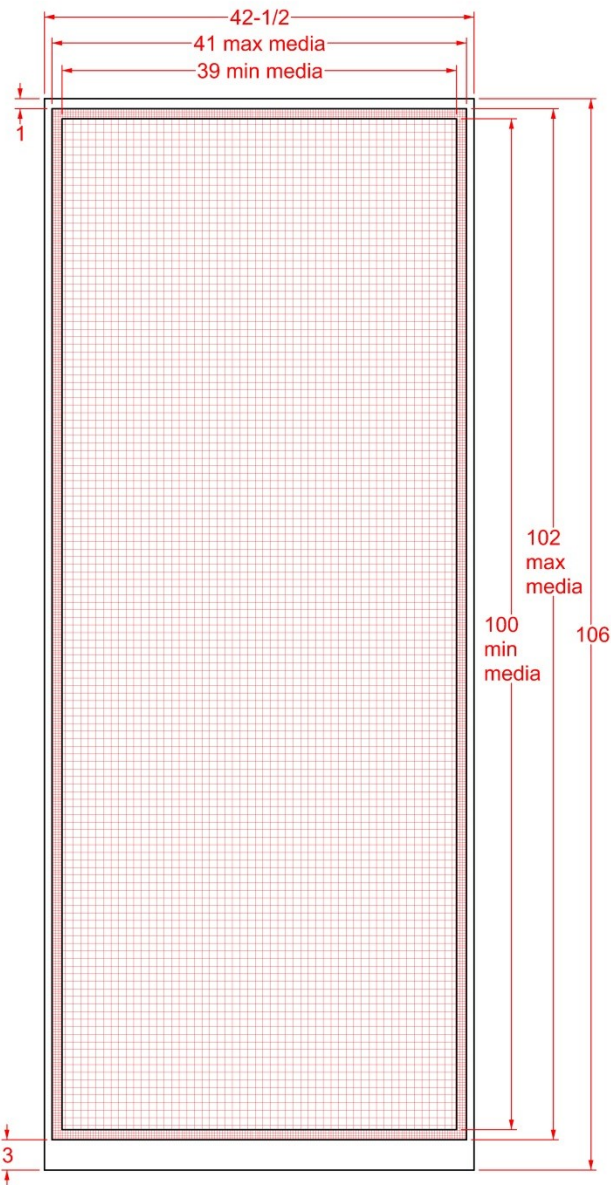
Document Link: <http://www.mgs-designs.com/BD/DWG/castsignage1.pdf>

Assy: Cart Signage

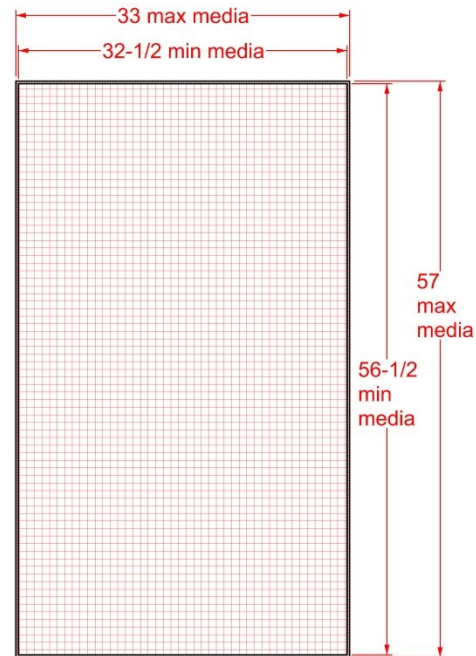
Sub-Assy: Cast Cart Signage







Back Wall Art
.4" Max, Thickness



Vitrine Art
.25" Max. Thickness



Flip Fixture Top Art
(Thinwall Sheet Media)



Flip Fixture Frame Art
(Thinwall Sheet Media)

Revision: A /10-5-10

Levi's

Document Link: <http://www.mgs-designs.com/BD/DWG/media.pdf>

Assy: Media

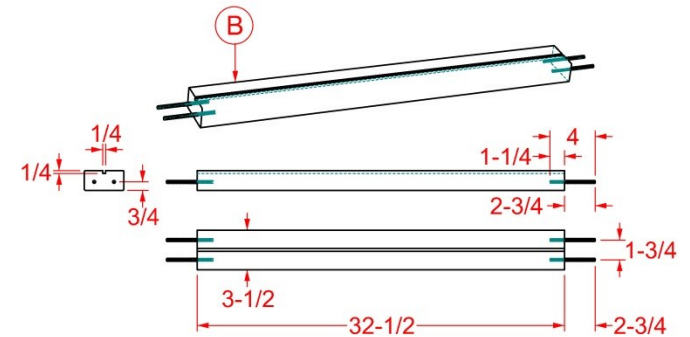
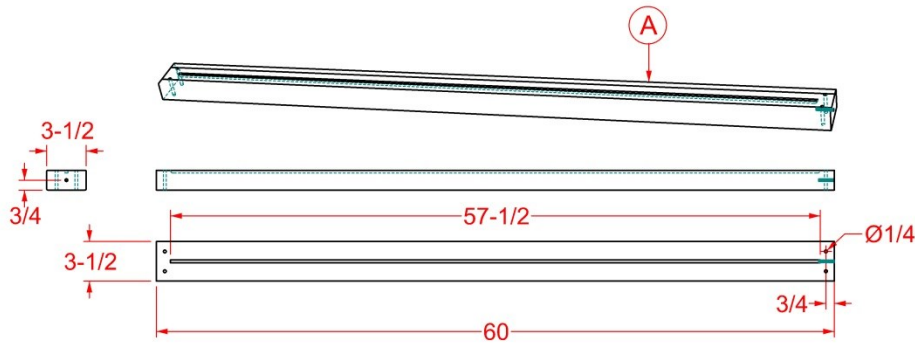
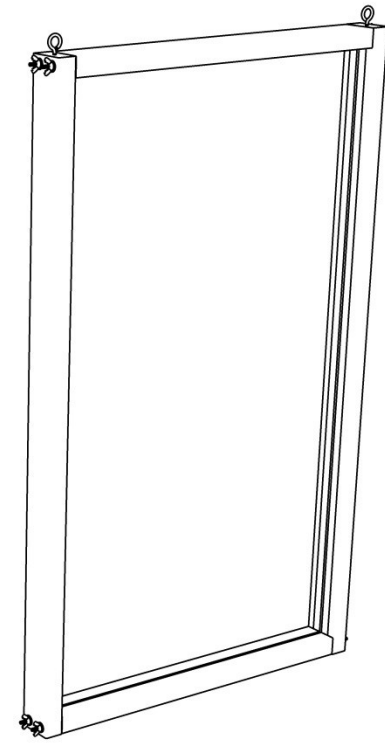
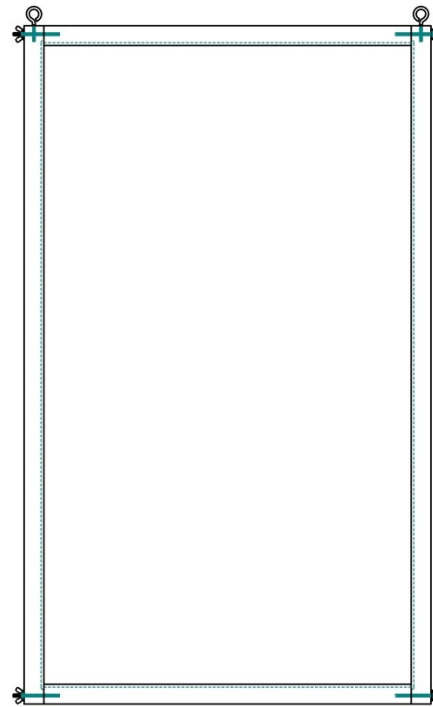
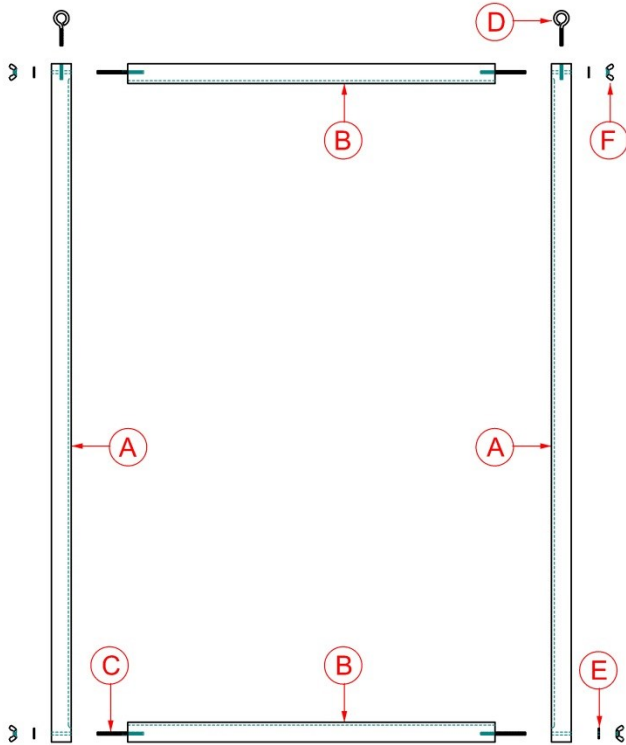
Sub-Assy: All printed sizes

C 1/4"-20 Threaded Rod - 4" Long - Qty. = 8
<http://www1.mscdirect.com/CGI/GSDRVSM?PACACHE=000000158978161>

D 1/4"-20 Eyebolt - 3" Long - Qty. =2
<http://www1.mscdirect.com/CGI/GSDRVSM?PACACHE=000000158980828>

E 1/4" - I.D. Washer - Qty. =8
<http://www1.mscdirect.com/CGI/GSDRVSM?PACACHE=000000158983844>

F 1/4"-20 Wingnut - Qty. =8
<http://www1.mscdirect.com/CGI/GSDRVSM?PACACHE=000000158982798>



Notes:

1. Use 2"x 4" pine stud for frame

Revision: A /10-20-10

Levi's

Link: <http://www.mgs-designs.com/BD/DWG/hangingmedia.pdf>

Assy: Hanging Media

Sub-Assy: Frame Assy